



FORMICA® Worktop Collection



THAILAND

Formica (Thailand) Co., Ltd.
51/27 Moo 2,
Poochaosamingprai Road,
Bangyaprak, Phrapradaeng,
Samutprakarn 10130 Thailand
Tel : (66-2) 701-9600
Fax: (66-2) 384-7537

Thailand Sales Office
216/63-64 L.P.N. Tower Building,
15th Floor, Nanglinchee Road,
Chongnonsi, Yannawa, Bangkok
10120 Thailand
Tel : (66-2) 285-4473 / (66-2) 285-4474
Fax: (66-2) 285-2899

SINGAPORE

Formica (Singapore) Pte. Ltd.
No. 502/502A, Sims Avenue
Singapore 387567
Tel : (65) 6514-1313
Fax: (65) 6846-7030

MALAYSIA

Formica (Malaysia) Sdn. Bhd.
B-10-3A, Level 10, Menara Bata,
PJ Trade Centre, No. 8, Jalan TJU
8/8A, Bandar Damansara Perdana
47820 Petaling Jaya, Selangor D.E.
Malaysia
Tel : (60-3) 7710-0512
Fax: (60-3) 7727-0510

INDONESIA

Sales Representative Office
Prince Center Building, 15th Floor,
Suite 1503 Jl. JendSudirman Kav.
3-4, Jakarta Pusat 10220 Indonesia
Tel : (62-21) 5700-477
Fax: (62-21) 5700-437

VIETNAM

Sales Representative Office
Level 3, 414 Nguyen Thi Minh Khai
Street, District 3, Ho Chi Minh City,
Vietnam
Tel : (84-28) 3832-6128
Fax: (84-28) 3832-6129

www.formica.com



Beautiful surfaces that reflect your lifestyle

The iconic name of Formica® is synonymous with kitchen design; our laminates were a revolutionary material that brought colour, style and practicality to kitchens all over the world.

With our latest Formica® Worktop Collection, we strive to create beautiful environments, whatever your style and personality, to make your kitchen, the heart of your home.

The real beauty of our classic laminate designs is that they will be as fresh and striking in years to come, as when they are first installed.

With so much versatility and choice, the Formica worktops range offers worktops, breakfast bars, islands and countertops that will allow you to create a truly beautiful kitchen that best reflects your lifestyle and taste.

Why accept another laminate tabletop brand, when you can have the real Formica worktops?

...Accept no substitute

Front Cover
Living room interior showing a White Marble Herringbone (#9310) round table in 36mm thickness.

Back Cover
Close-up of White Marble Herringbone (#9310) worktop.



Close-up of 600mm wide Ferro Grafite (#9483) worktop in 20mm thickness.

180fx®

Inspiration on a grand scale. Formica® 180fx® laminates are designed using full slabs of stone and printed using the latest high definition printing technology.

Bringing exquisite detail on a large scale and mirroring the exact characteristics of natural materials across a large laminate sheet, Formica 180fx laminates are without the repetition found on conventional laminates.



Marvellous Marbles

All the visual drama of marble, without the dramatic price. Formica® Worktop Collection presents a selection of exotic and luxurious marbles that will make a big design statement, without demanding a big budget.

Bringing an undeniable wow factor to any kitchen, Formica marbles are available in a variety of colours to suit your interior design tastes. To show off the full drama of these marbles, use as a large island or breakfast bar.

Actual marble is a more open grain stone, which makes it softer and more delicate. Formica 180fx® marble decors are based on real stone slabs, but are encapsulated into a high performance laminate surface, making it water resistant and offering protection from scratches and stains.

Formica 180fx® marbles are beautiful, elegant, and timeless.





Calacatta Marble (#3460) displaying exquisite veined grey on a luminous background of creamy white.



▲ Based on an Arabescato slab, Marbled Cappuccino (#9482) is a black marble with swirls of warm grey and chocolate brown.

◀ Ferro Grafite (#9483), an elegant dark grey marble with subtle swirls and bold white veins.



▲ The tiled pattern is made up of 1.5" x 6" pieces of classic Carrara marble that zig zags down the length of the sheet, while complex vein patterns in light grey to charcoal make sure that every single tile in White Marble Herringbone (#9310) is unique and different.

An Italian classic, White Bardiglio (#9306) has a timeless feel. The characteristic veining makes this stone a fresh alternative to the typical Italian white marble. ►



Striking Stones

Other popular stone looks include engineered stone, slate, concrete, ceramics and soapstone, but these can be hard to source, fabricate and install. They can also be expensive and the performance of these materials in a functional kitchen can have limitations.

The Formica® Worktop Collection captures the best of these looks and makes them available, practical and affordable.

Premium and exclusive Formica laminate textures add the perfect finishing touch, to give the look of highly polished, honed or weathered stones.





Modeled after oiled, deep-toned soapstone, Jet Sequoia (#3476) is a true-black version of the popular sequoia patterns with finely drawn, intersecting veins of white and grey.



▲ Silver Shalestone (#9307) is a pleasing blend of warm and cool grey tones in a monochromatic colour palette and is perfect for marrying old and new neutrals in interior décor.

Soapstone Sequoia (#3459) is a warm and inviting stone with finely drawn veins in white, beige and grey that criss-cross over misty hues of warm and cool grey. ► Honed is warm to the touch low-sheen satin finish with subtle surface clefts and crevices that mimic softly brushed beautiful stone.

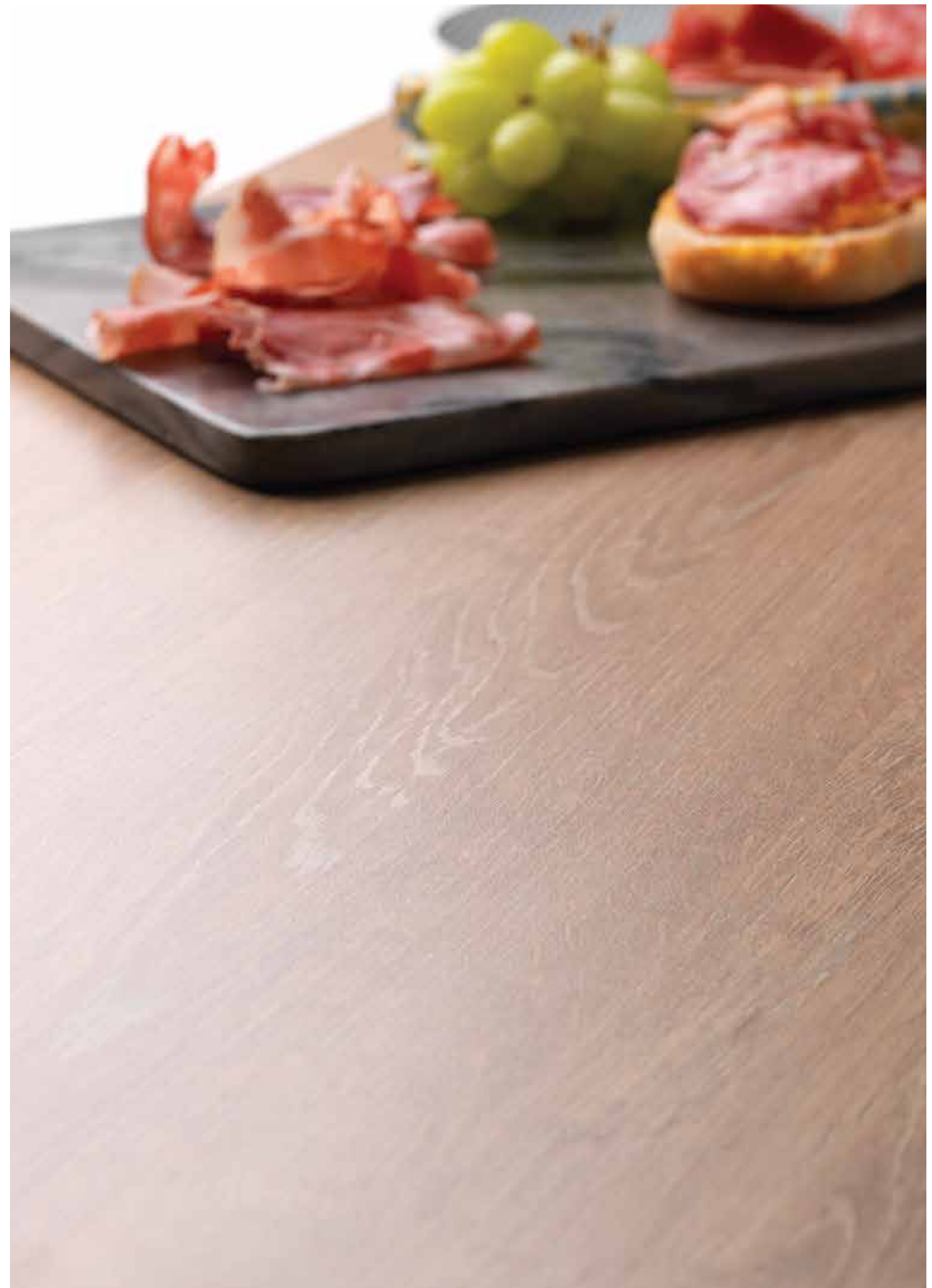
Wonderful Woods

The ultimate all rounder, there's a wood worktop to complement any kitchen style, traditional or modern, light or dark.

Formica® Worktop Collection offers a classic selection of wood worktops to add natural style and warmth to any kitchen. High quality prints beautifully capture the detail of each species, ranging from classic Oak and Walnut to rustic Beamwood and characterful Fiberwood

The real beauty of Formica woods is that you get the look, without the hassle, as our laminate worktops are water and stain resistant and unlike real wood, require no treatments or oiling.





A dark oak design, Rural Oak (#8853) has a softly weathered classic feel, coloured with silver grey and brown to make it a perfect fit for contemporary kitchen interiors.



▲ Wide Planked Walnut (#9479) is a harmonious mix of walnut heartwood and sapwood perfected with gold and brown hues. Add visual drama unmatched by any other laminate to any room in your home.

◀ An elegantly rustic woodgrain Weathered Beamwood (#6410). Nature and years of aging worked magic on the beam woods, giving it an elegant patina and characterful stress cracks.

Worktops, Breakfast Bars & Islands

Importance of design

Good design can dramatically change the function of a kitchen, from a place to prepare food, into a space to eat and enjoy it, to socialise and relax, to work or study.

Great design can transform your kitchen, into the heart of your home.

Clever use of space and materials is as important in small kitchens, as in large open plan kitchens:

- A breakfast bar with recessed seating creates a compact kitchen diner.
- A waterfall edge on the end of a worktop run or island, cascading the same design both horizontally and vertically to wrap kitchen furniture, creates a modern look, with sleek, clean lines.
- If you have the space for a large island, it makes a striking and very practical centre piece to any kitchen.
- Mixing different material looks can create an eye catching contrast, such as using Formica® 180fx® Marbled Cappuccino, alongside Wide Planked Walnut.

Variety and versatility

The Formica® Worktop Collection offers a wide variety of worktops, breakfast bars and islands, in a variety of different thicknesses and edge options, to make any possible kitchen design, a reality.

- A wide range of designs and finishes.
- Look out for 180fx® collection for big, bold and dramatic patterns.
- A variety of lengths up to 3000mm on selected decors to accommodate your space.
- Square edge with matching HPL strip available on the full worktop range.
- Postformed profiles are available. (Refer to Formica® Perform Components and product Sizes & Availability for more details)
- Particle board as standard substrate.
- Moisture resistance particle board and MDF are available upon request.



Kitchen interior showing Calacatta Marble (#3460) in a 600mm wide worktop and 900mm wide breakfast bar in 36mm thickness.



Protec+® Ultra White 3200UN

The Power of Protec+®

A high performance premium laminate product, introduces an additional layer of hygienic protection to your environment through the utilization of the antimicrobial properties of silver.

The product has been tested against a number of leading standards including ISO 22196:2011, JIS Z 2801 and ASTM G21 and it is capable of reducing microbe count on a surface by up to 99.5%.

Effective against a broad spectrum of microbes, Protec+® reduces the growth of bacteria and fungi, providing a more hygienic surface and protecting consumers against their potentially negative effects.

When properly maintained, the protection will last for the expected life of the treated product and will help to reduce cross-contamination.

A Cleaner and Safer Environment Built to Last



Protec+® Aged Ash 8844UN

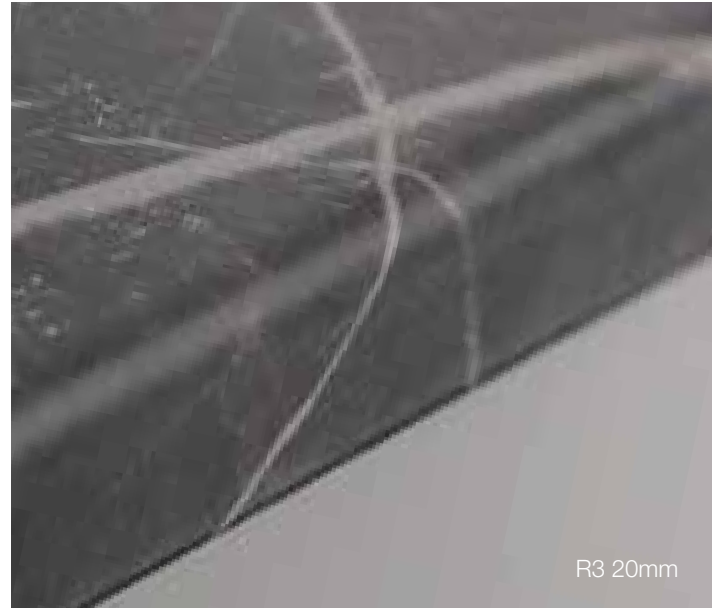
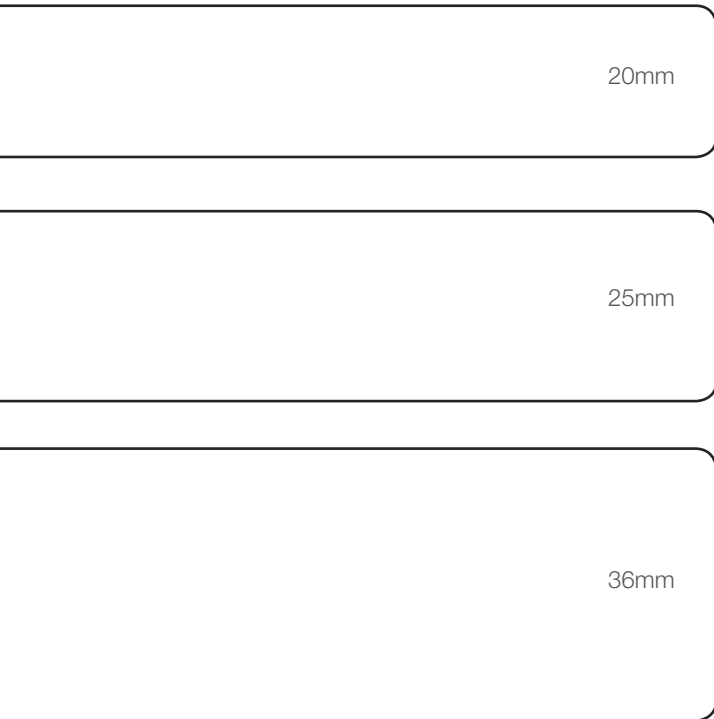
Good to be square

The trend in worktop edge profiles is; the squarer the better. This best reflects the slab look of stone and wood worktops.

R3

Designed specifically to enhance our beautiful work surfaces, R3 is an angular profiled edge with a subtle 3mm curve top and bottom.

Work surface with R3 edge profile is now available on selected items.



Worktops with square edge

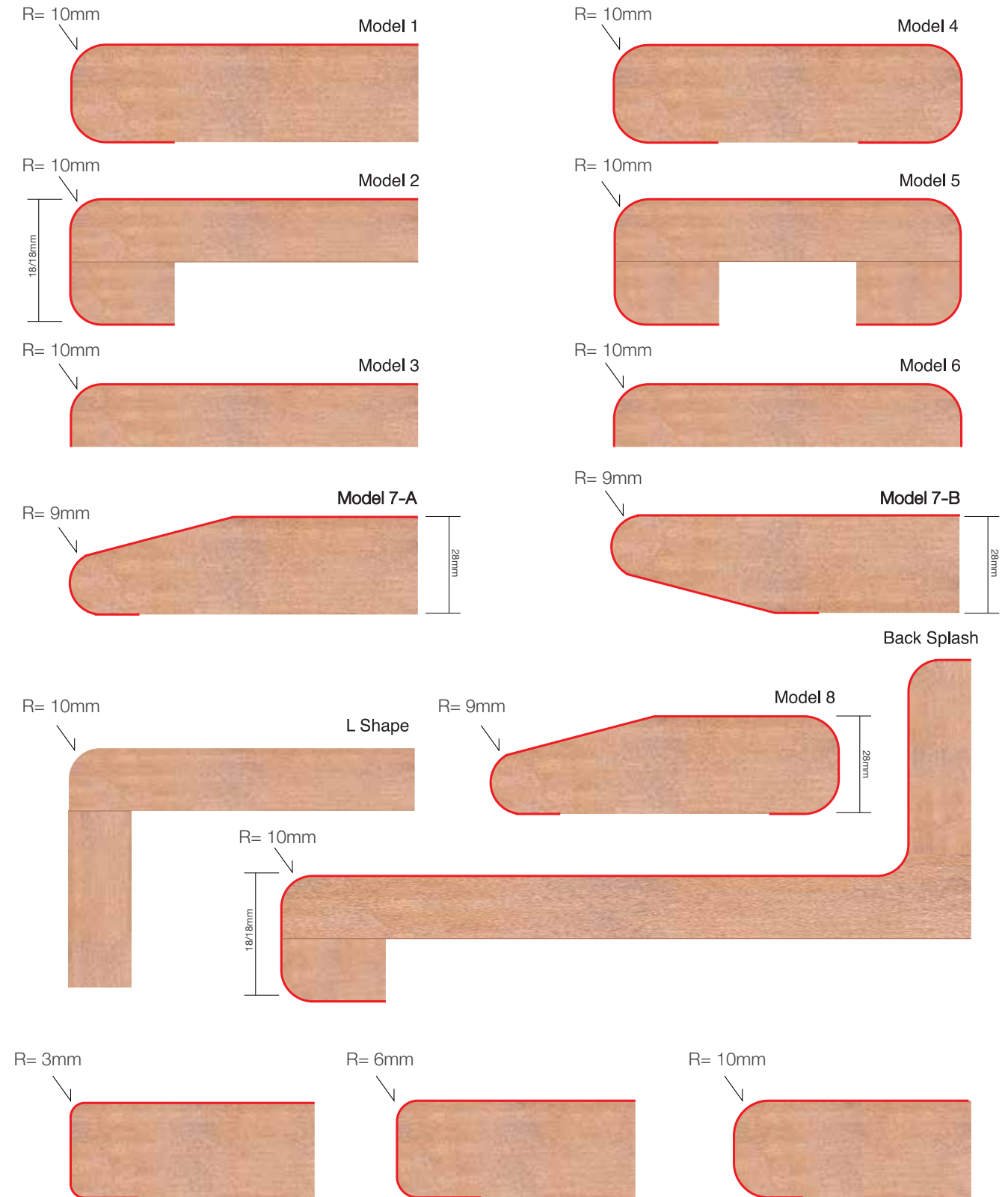
If you are looking for a square edge, Formica® Worktop Collection is available with a matching laminate edge strip pre applied.

Use square edge to create clean lines and bespoke component shapes. Partner with 180fx® stones to create really dramatic work surfaces.



Formica® Perform Components

Formica® Perform Components come in different patterns, aim at satisfying individual need and design.





Soapstone Sequoia (#3459) with Honed texture.



Aged Ash (#8844) with Drygrain texture

A touch of class

Texture adds an extra dimension to any surface. Partnering the right design and texture together, elevates the aesthetics of the surface and also the tactile experience for those who touch it.

At Formica Group, not only do we design our own textures, we manufacture our own steel texture plates too.

Chalk (CK)

A low gloss, rough-to-the-touch, sanded finish that enhances the wood look.



Drygrain (D8)

Pure and natural in its matt finish. Drygrain is elegantly etched with irregular linear finish while retaining the full glory of its woodgrains in the most authentic way.



NDF (N)

A new grown up smooth, low gloss finish. Paired with beautiful marble designs to create dramatic effects.



Honed™ (HN)

A low-sheen finish with subtle clefts and crevices that mimic the distinctive tactile appeal of stone.



Natural Grain (NG)

A low luster finish featuring small evenly spaced wood pore details. Excellent to enhance modern veneer and cathedral wood looks.



Nude Matte (NM)

Smooth and silky touch. Low gloss finish as the polished nude look of materials.



Naturelle™ (NT)

Subtle straight grain ticking creates a realistic natural wood look and low sheen finish.



Sawcut (ST)

A striking resemblance to the intriguing cross-chatter of sawn lumber, elevates its rustic charm to a whole new level.



Matte™ (UN)

Imparts a warm, pleasing effect that enhances the beauty of colour and produces a great clarity and depth.



Wirebrush (WB)

A rich complex surface finish that mimics wire brushed soft woods.



Range To View

Woodgrain



1079 Natural Oak 0867 Sand Cherry 0860 Blond Afrosia
R3/R6 in NT texture 6213 Cherry Strand 5481 Oiled Olivewood



5487 Oiled Walnut 8846 Oiled Legno
R3/R6 in NT texture 6437 Chalked Knotty Ash 6052 Cottage Oak 6055 Aged Walnut



5150 American Walnut 8915 Walnut Fiberwood 9484 Oxidized Beamwood



8849 Natural Teak
R3/R6 in NT texture 5904 Wild Cherry 9001 Noce Orvieto 6402 Thermo Walnut 8847 Jarrah Legno

Range To View

Woodgrain



6404 Bleached Elm 6212 Wheat Strand
R3/R6 in NT texture 8910 Raw Birchply 8843 Natural Ash 8844 Aged Ash



6441 Natural Washed Maple 8906 Danish Maple 6321 Oxidized Maple 9480 Salvage Planked Elm 6053 Chalet Oak



6407 Honey Elm 8853 Rural Oak
R3/R6 in NT texture 5483 Mocca Firwood



9437 Toffee Blackwood 5485 Spice Maple
R3/R6 in NT texture 5486 Classic Walnut 9479 Wide Planked Walnut 6210 Couture Wood

Range To View Woodgrain



8902
White Painted Wood



8841
White Ash



6405
Bisque Elm



8854
Alabaster Oak
R3/R6 in NT texture



8903
Limed Timberworks



7672
Pale Maple



9222
Grayed Maple



6362
Concrete Formwood



0869
Powdered Oak



8914
Weathered Fiberwood



6410
Weathered Beamwood



8916
Blackened Fiberwood



8835
Sarum Strand



0812
Cinnamon Ash



6308
Vogue Wood



0813
Cuban Wood



8848
Blacken Legno
R3/R6 in NT texture

Range To View 180fx®



3460
Calacatta Marble
R6 in N texture



3421
Bianca Luna



9310
White Marble
Herringbone



9302
Fantasy Marble



9482
Marbled Cappuccino



3459
Soapstone Sequoia



9483
Ferro Grafite
R3/R6 in N texture



3476
Jet Sequoia



6320
Black Fusion



6363
Elemental Ash
R3/R6 in HN texture



9307
Silver Shalestone
R3/R6 in HN texture



8830
Elemental Concrete



9306
White Bardiglio



9311
Silver Oak Herringbone



3458
Travertine Silver
R3/R6 in N texture

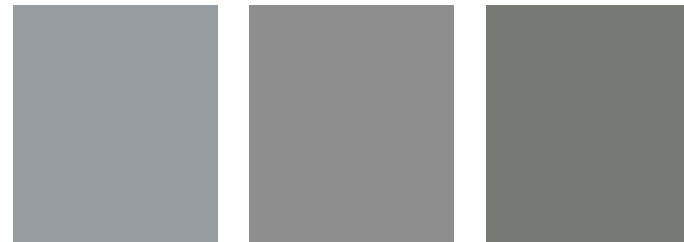
Range To View Solid Colours & Patterns



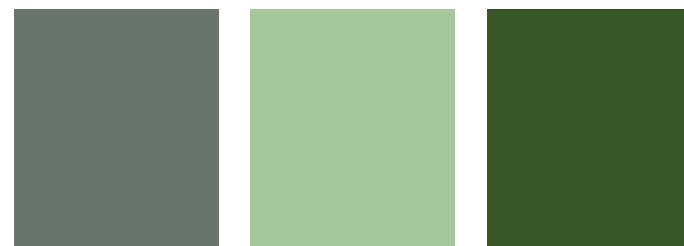
3200 Ultra White 0459 Brite White 1040 Alpino 7197 Dover White 1962 Magnolia 0927 Folkstone



0464 Graystone 7929 Oyster Grey 7921 Birch



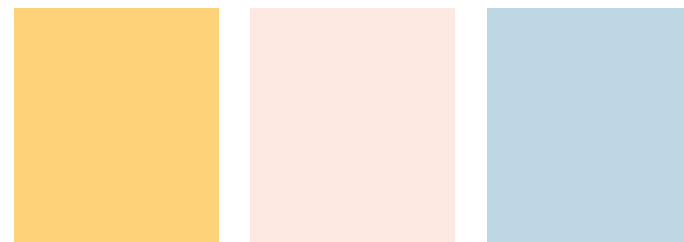
0484 Steel 7928 Mouse 1097 Citadel
R3/R6 in UN Texture



8793 Green Slate 8794 Enamel 8796 Algae



0806 Battalion
R3/R6 in UN texture 0837 Graphite 0909 Black



2022 Tenere 5491 Cameo Pink 1194 Iris



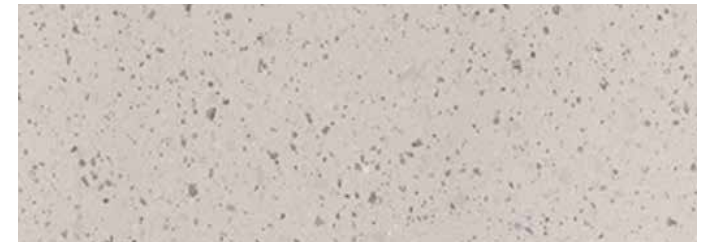
Range To View Solid Colours & Patterns



4177 Lime 1485 Chrome Yellow 3210 Levante 0845 Spectrum Red 2046 Beaujolais 7897 Spectrum Green



7969 Navy Blue 5323 Nocturne 2200 Dark Chocolate



8812 Tinted Paper Terrazzo

DISCLAIMER :

8812 Tinted Paper Terrazzo is made from small fragments of Formica's post-production solid colour paper to create a new paper sheet.

Hence, every sheet is unique due to the natural paper making process.



8994 Paint Scrape Steel



Sizes & Availability

Code	Texture	Description	Postformed			Square Edge		Protec+	Maximum Size					
			R3	R6	R10	HPL Strip	ABS Edgeband for 20mm THK Worktop		Available with Square Edge & R10	20mm (Postformed)	20mm (Square Edge)	25mm (Postformed)	25mm (Square Edge)	28mm (Square Edge & R10)
			<i>Woodgrain</i>											
0812	D8	Cinnamon Ash			•	•		•	•	•	•			
0812	NT	Cinnamon Ash			•	•		•	•	•	•			
0813	NT	Cuban Wood			•	•		•	•	•	•			
0860	NT	Blond Afromosia	•	•	•	•	•	•	•	•	•	•	•	
0860	UN	Blond Afromosia			•	•	•	•	•	•	•			
0867	NT	Sand Cherry			•	•		•	•	•	•			
0869	NT	Powdered Oak			•	•		•	•	•	•			
0869	UN	Powdered Oak			•	•	•	•	•	•	•			
1079	NT	Natural Oak			•	•	•	•	•	•	•			
1079	ST	Natural Oak			•	•		•	•	•	•			
5150	D8	American Walnut			•	•		•	•	•	•			
5150	NT	American Walnut			•	•	•	•	•	•	•			
5481	NT	Oiled Olivewood			•	•		•	•	•	•			
5481	UN	Oiled Olivewood			•	•		•	•	•	•			
5483	NT	Mocca Firwood			•	•	•	•	•	•	•			
5483	UN	Mocca Firwood			•	•	•	•	•	•	•			
5483	WB	Mocca Firwood			•	•		•	•	•	•			
5485	NT	Spice Maple	•	•	•	•		•	•	•	•	•	•	
5485	UN	Spice Maple			•	•	•	•	•	•	•			
5485	WB	Spice Maple			•	•		•	•	•	•			
5486	NT	Classic Walnut			•	•	•	•	•	•	•	•	•	
5486	UN	Classic Walnut			•	•		•	•	•	•			
5486	WB	Classic Walnut			•	•		•	•	•	•			
5487	NT	Oiled Walnut			•	•		•	•	•	•	•	•	
5487	UN	Oiled Walnut			•	•		•	•	•	•			
5904	NT	Wild Cherry			•	•	•	•	•	•	•			
5904	UN	Wild Cherry			•	•		•	•	•	•			
6052	NT	Cottage Oak			•	•		•	•	•	•			
6052	ST	Cottage Oak			•	•		•	•	•	•			
6053	NT	Chalet Oak			•	•	•	•	•	•	•			

Sizes & Availability

Code	Texture	Description	Postformed			Square Edge		Protec+	Maximum Size					
			R3	R6	R10	HPL Strip	ABS Edgeband for 20mm THK Worktop		Available with Square Edge & R10	20mm (Postformed)	20mm (Square Edge)	25mm (Postformed)	25mm (Square Edge)	28mm (Square Edge & R10)
			<i>Woodgrain</i>											
6053	ST	Chalet Oak			•	•		•	•	•	•			
6055	D8	Aged Walnut			•	•		•	•	•	•			
6055	NT	Aged Walnut			•	•	•	•	•	•	•			
6055	ST	Aged Walnut			•	•		•	•	•	•			
6210	NT	Couture Wood			•	•		•	•	•	•			
6210	UN	Couture Wood			•	•		•	•	•	•			
6212	NT	Wheat Strand	•	•	•	•		•	•	•	•			
6212	UN	Wheat Strand			•	•		•	•	•	•			
6213	NT	Cherry Strand			•	•		•	•	•	•			
6213	UN	Cherry Strand			•	•		•	•	•	•			
6308	NT	Vogue Wood			•	•		•	•	•	•			
6321	NT	Oxidized Maple			•	•	•	•	•	•	•			
6362	CK	Concrete Formwood			•	•	•	•	•	•	•			
6362	HN	Concrete Formwood			•	•		•	•	•	•			
6402	NT	Thermo Walnut			•	•	•	•	•	•	•	•	•	
6404	D8	Bleached Elm			•	•		•	•	•	•	•	•	
6404	NG	Bleached Elm			•	•		•	•	•	•			
6404	NT	Bleached Elm			•	•	•	•	•	•	•			
6405	D8	Bisque Elm			•	•		•	•	•	•	•	•	
6405	NG	Bisque Elm			•	•		•	•	•	•			
6405	NT	Bisque Elm			•	•	•	•	•	•	•			
6407	D8	Honey Elm			•	•		•	•	•	•	•	•	
6407	NG	Honey Elm			•	•		•	•	•	•			
6407	NT	Honey Elm			•	•	•	•	•	•	•			
6410	NG	Weathered Beamwood			•	•	•	•	•	•	•			
6410	NT	Weathered Beamwood			•	•		•	•	•	•			
6437	CK	Chalked Knotty Ash			•	•	•	•	•	•	•			
6437	D8	Chalked Knotty Ash			•	•		•	•	•	•			
6441	CK	Natural Washed Maple			•	•	•	•	•	•	•			
6441	ST	Natural Washed Maple			•	•		•	•	•	•			

Sizes & Availability

Code	Texture	Description	Postformed			Square Edge		Protec+	Maximum Size						
			R3	R6	R10	HPL Strip	ABS Edgeband for 20mm THK Worktop		Available with Square Edge & R10	20mm (Postformed)	20mm (Square Edge)	25mm (Postformed)	25mm (Square Edge)	28mm (Square Edge & R10)	36mm (Square Edge & R10)
			<i>Woodgrain</i>												
7672	NT	Pale Maple			•	•	•	•	•	•	•	•	•	•	•
8835	NT	Sarum Strand			•	•		•	•	•	•	•	•	•	•
8841	D8	White Ash			•	•		•	•	•	•	•	•	•	•
8843	D8	Natural Ash			•	•		•	•	•	•	•	•	•	•
8843	NT	Natural Ash			•	•		•	•	•	•	•	•	•	•
8843	UN	Natural Ash			•	•	•	•	•	•	•	•	•	•	•
8843	WB	Natural Ash			•	•		•	•	•	•	•	•	•	•
8844	D8	Aged Ash			•	•		•	•	•	•	•	•	•	•
8844	NT	Aged Ash			•	•	•	•	•	•	•	•	•	•	•
8844	UN	Aged Ash			•	•	•	•	•	•	•	•	•	•	•
8844	WB	Aged Ash			•	•		•	•	•	•	•	•	•	•
8846	D8	Oiled Legno			•	•		•	•	•	•	•	•	•	•
8846	NT	Oiled Legno	•	•	•	•		•	•	•	•	•	•	•	•
8847	D8	Jarra Legno			•	•		•	•	•	•	•	•	•	•
8847	NT	Jarra Legno			•	•		•	•	•	•	•	•	•	•
8848	D8	Blacken Legno			•	•		•	•	•	•	•	•	•	•
8848	NT	Blacken Legno	•	•	•	•	•	•	•	•	•	•	•	•	•
8849	NT	Natural Teak	•	•	•	•	•	•	•	•	•	•	•	•	•
8849	ST	Natural Teak			•	•		•	•	•	•	•	•	•	•
8849	WB	Natural Teak			•	•		•	•	•	•	•	•	•	•
8853	D8	Rural Oak			•	•		•	•	•	•	•	•	•	•
8853	NT	Rural Oak	•	•	•	•		•	•	•	•	•	•	•	•
8853	ST	Rural Oak			•	•		•	•	•	•	•	•	•	•
8854	D8	Alabaster Oak			•	•		•	•	•	•	•	•	•	•
8854	NT	Alabaster Oak	•	•	•	•		•	•	•	•	•	•	•	•
8854	ST	Alabaster Oak			•	•		•	•	•	•	•	•	•	•
8902	D8	White Painted Wood			•	•	•	•	•	•	•	•	•	•	•
8903	NT	Limed Timberworks			•	•	•	•	•	•	•	•	•	•	•
8906	NT	Danish Maple			•	•		•	•	•	•	•	•	•	•
8910	NT	Raw Birchply			•	•	•	•	•	•	•	•	•	•	•

Sizes & Availability

Code	Texture	Description	Postformed			Square Edge		Protec+	Maximum Size						
			R3	R6	R10	HPL Strip	ABS Edgeband for 20mm THK Worktop		Available with Square Edge & R10	20mm (Postformed)	20mm (Square Edge)	25mm (Postformed)	25mm (Square Edge)	28mm (Square Edge & R10)	36mm (Square Edge & R10)
			<i>Woodgrain</i>												
8914	D8	Weathered Fiberwood			•	•	•	•	•	•	•	•	•	•	•
8915	D8	Walnut Fiberwood			•	•		•	•	•	•	•	•	•	•
8916	D8	Blackened Fiberwood			•	•		•	•	•	•	•	•	•	•
9001	NT	Noce Orvieto			•	•	•	•	•	•	•	•	•	•	•
9001	UN	Noce Orvieto			•	•		•	•	•	•	•	•	•	•
9222	NT	Grayed Maple			•	•	•	•	•	•	•	•	•	•	•
9437	D8	Toffee Blackwood			•	•		•	•	•	•	•	•	•	•
9479	NG	Wide Planked Walnut			•	•	•	•	•	•	•	•	•	•	•
9480	D8	Salvage Planked Elm			•	•		•	•	•	•	•	•	•	•
9480	NG	Salvage Planked Elm			•	•		•	•	•	•	•	•	•	•
9484	NG	Oxidized Beamwood			•	•		•	•	•	•	•	•	•	•
9484	NT	Oxidized Beamwood			•	•		•	•	•	•	•	•	•	•
9484	ST	Oxidized Beamwood			•	•		•	•	•	•	•	•	•	•
<i>180fx®</i>															
3421	N	Bianca Luna			•	•		•	•	•	•	•	•	•	•
3458	HN	Travertine Silver			•	•	•	•	•	•	•	•	•	•	•
3458	N	Travertine Silver	•	•	•	•		•	•	•	•	•	•	•	•
3459	HN	Soapstone Sequoia			•	•		•	•	•	•	•	•	•	•
3459	N	Soapstone Sequoia			•	•		•	•	•	•	•	•	•	•
3460	N	Calacatta Marble			•	•		•	•	•	•	•	•	•	•
3476	HN	Jet Sequoia			•	•	•	•	•	•	•	•	•	•	•
3476	N	Jet Sequoia			•	•		•	•	•	•	•	•	•	•
6320	NM	Black Fusion			•	•		•	•	•	•	•	•	•	•
6363	HN	Elemental Ash	•	•	•	•	•	•	•	•	•	•	•	•	•
8830	HN	Elemental Concrete			•	•	•	•	•	•	•	•	•	•	•
9302	HN	Fantasy Marble			•	•		•	•	•	•	•	•	•	•
9306	NM	White Bardiglio			•	•		•	•	•	•	•	•	•	•
9307	HN	Silver Shalestone	•	•	•	•		•	•	•	•	•	•	•	•
9310	NM	White Marble Herringbone			•	•		•	•	•	•	•	•	•	•
9311	NM	Silver Oak Herringbone			•	•		•	•	•	•	•	•	•	•

Sizes & Availability

Code	Texture	Description	Postformed			Square Edge		Protec+	Maximum Size					
			R3	R6	R10	HPL Strip	ABS Edgeband for 20mm THK Worktop		Available with Square Edge & R10	20mm (Postformed)	20mm (Square Edge)	25mm (Postformed)	25mm (Square Edge)	28mm (Square Edge & R10)
			180fx®											
9482	N	Marbled Cappuccino			•	•		•	•	•	•			
9483	N	Ferro Grafite	•	•	•	•		•	•	•	•			
Solid Colours and Patterns														
0459	UN	Brite White			•	•		•	•	•	•			
0464	UN	Graystone			•	•		•	•	•	•			
0484	UN	Steel			•	•		•	•	•	•			
0806	NM	Battalon			•	•		•	•	•	•			
0806	UN	Battalon	•	•	•	•	•	•	•	•	•			
0837	CK	Graphite			•	•		•	•	•	•			
0837	D8	Graphite			•	•		•	•	•	•			
0837	NM	Graphite			•	•		•	•	•	•			
0837	ST	Graphite			•	•		•	•	•	•			
0837	UN	Graphite			•	•		•	•	•	•			
0837	WB	Graphite			•	•		•	•	•	•			
0845	UN	Spectrum Red			•	•	•	•	•	•	•			
0909	CK	Black			•	•		•	•	•	•			
0909	D8	Black			•	•		•	•	•	•			
0909	UN	Black			•	•	•	•	•	•	•	•	•	
0909	WB	Black			•	•		•	•	•	•			
0927	ST	Folkstone			•	•		•	•	•	•			
0927	UN	Folkstone			•	•	•	•	•	•	•	•	•	
1040	UN	Alpino			•	•	•	•	•	•	•			
1097	UN	Citadel	•	•	•	•		•	•	•	•			
1194	UN	Iris			•	•	•	•	•	•	•	•	•	
1485	UN	Chrome Yellow			•	•	•	•	•	•	•			
1962	UN	Magnolia			•	•		•	•	•	•			
2022	UN	Tenere			•	•		•	•	•	•			
2046	NM	Beaujolois			•	•		•	•	•	•			
2046	UN	Beaujolois			•	•		•	•	•	•			
2200	UN	Dark Chocolate			•	•	•	•	•	•	•			

Sizes & Availability

Code	Texture	Description	Postformed			Square Edge		Protec+	Maximum Size					
			R3	R6	R10	HPL Strip	ABS Edgeband for 20mm THK Worktop		Available with Square Edge & R10	20mm (Postformed)	20mm (Square Edge)	25mm (Postformed)	25mm (Square Edge)	28mm (Square Edge & R10)
			Solid Colours and Patterns											
3200	D8	Ultra White			•	•		•	•	•	•			
3200	UN	Ultra White			•	•	•	•	•	•	•	•	•	
3210	UN	Levante			•	•		•	•	•	•			
4177	UN	Lime			•	•	•	•	•	•	•			
5323	UN	Nocturne			•	•		•	•	•	•			
5491	UN	Cameo Pink			•	•	•	•	•	•	•	•	•	
7197	UN	Dover White			•	•	•	•	•	•	•			
7897	UN	Spectrum Green			•	•		•	•	•	•			
7928	NM	Mouse			•	•		•	•	•	•			
7928	UN	Mouse			•	•	•	•	•	•	•	•	•	
7929	NM	Oyster Grey			•	•		•	•	•	•			
7929	UN	Oyster Grey			•	•		•	•	•	•			
7969	UN	Navy Blue			•	•	•	•	•	•	•			
8793	NM	Green Slate			•	•		•	•	•	•			
8793	UN	Green Slate			•	•		•	•	•	•			
8794	NM	Enamel			•	•		•	•	•	•			
8794	UN	Enamel			•	•		•	•	•	•			
8796	NM	Algae			•	•		•	•	•	•			
8796	UN	Algae			•	•		•	•	•	•			
8812	CK	Tinted Paper Terrazzo			•	•		•	•	•	•			
8994	CK	Paint Scrape Steel			•	•		•	•	•	•			

Formica® Bonded Solutions

Established in 1992, the operation is located nearby Formica HPL Plant in Samutprakarn. Production area is 3,000 sqm. The products are manufactured in accordance with ISO 9001:2015, ISO 14001:2015 and OHSAS 18001:2007 criteria.

The quality assurance standards challenge manufacturers to continually measure, evaluate, and improve systems that ensure overall product quality and reliability. As a result, Formica products are verified to fit together properly and function flawlessly each and every time.



Bonded Solutions Product Portfolio

- Blank Top (for vertical and ceiling application)
- Compact Laminate Cut to Size
- Worktop Collection
- Door Collection



Formica®

A Global Brand of Interior Decorative Surfaces, Innovation and Leadership in Design

Formica's Logo History



Founded in 1913 by Hebert A. Faber and Daniel J. O'Conor, Formica Group has evolved to become the world's preferred manufacturer for decorative surfaces. Driven by new challenges and delivering constant innovations, we have been setting and surpassing benchmarks for quality laminates worldwide ever since.

Formica® is an iconic brand, which is intrinsically linked with the material, High Pressure Laminate (HPL). We have developed an unrivalled expertise that ensures products are fit for purpose and meet market demands. Working closely with architects, designers and specifiers, the company is ideally placed to offer new products and decors which complement current design trends, and has an ongoing product design and development process.

Formica®: Designs for today with forever in mind.

FORMICA GROUP IS COMMITTED TO MAKING SUSTAINABLE PRINCIPLES AND PRACTICES A PART OF EVERYTHING WE DO. WE STRIVE ADHERE TO THE HIGHEST ETHICAL STANDARDS AS WE ADVANCE IN OUR EFFORTS TO PROTECT VITAL RESOURCES FOR FUTURE NEEDS.

With sustainability a concern for the global community, Formica Group makes it a priority to other architects, designers and consumers a full range of environmental friendly surfacing products. Formica Group continually strives to create innovative product that promote a healthier environment.



GREENGUARD Certification

Formica® Laminates, Compact® and DecoMetal® are certified in Asia for the GREENGUARD Certification and GREENGUARD Gold Certification.



Carbon Reduction Label

Formica Group becomes the first laminate manufacturer in the world to be awarded with Carbon Trust's Carbon Reduction Label.