



## Formica® DecoMetal®

是板材表面使用真正的金屬精製而成的優質金屬美耐板，  
與金屬板材相比，不僅經久耐用，而且質地輕盈。

因採用特殊的壓花技術，在拋光之後具有各種不同的紋理，  
並經手工完成不同的表面裝飾元素，所以這種具有真正金屬表面的  
裝飾美耐板可以用於營造各種環境氛圍，從冷色調到暖色調，不僅  
可高調奢華，亦可低調樸拙，還可以創造其他裝飾效果，  
讓設計有更多應用及選擇。

The image shows two wooden chairs with black upholstered seats. The chairs are made of light-colored wood with a natural grain. They are positioned against a wall with a repeating diamond-shaped pattern in a reddish-brown color. The floor is made of light grey square tiles. The lighting is soft, creating subtle shadows on the wall and floor.

Diamond Antique Copper  
D8280 浮雕玫瑰金

\*紅色字表示為新色。

**S** 表示產品有常備庫存，非庫存產品請洽富美家業務人員訂購。

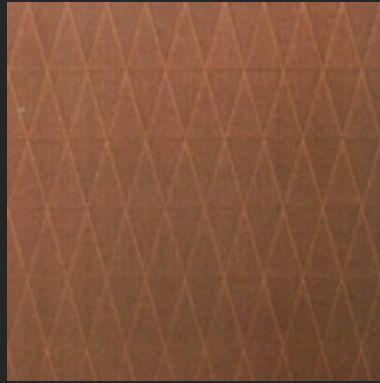
DECOMETAL® 金麗® 金屬

1



**Diamond Bronzestone**  
DH147 浮雕黃銅

**S**



**Diamond Antique Copper**  
D8280 浮雕玫瑰金

**S**



**Diamond Antique Brass**  
D8279 浮雕古銅

**S**

2



**Dimpled Goldtone**  
D2802 微芯金

**S**



**Dimpled Bronzestone**  
D2807 微芯銅

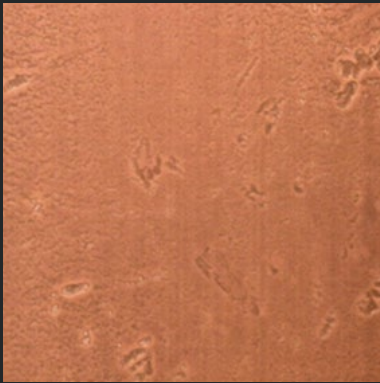
**S**



**Dimpled Anthracite**  
DH018 微芯鈦

**S**

3



**Moon Light Copper**  
D8277 月相亮玫瑰



**Moon Dark Copper**  
D8276 月相黑玫瑰



**Moon Brass**  
D8278 月相銅

4



**Moon Turquoise Copper**  
D8275 月相綠



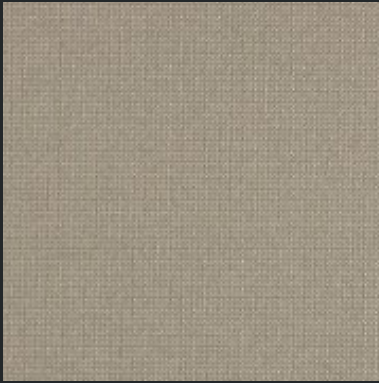
Plex Gold  
D5309 網織金

\* 紅色字表示為新色。

**S** 表示產品有常備庫存，非庫存產品請洽富美家業務人員訂購。

DECOMETAL® 金麗® 金屬

1



Plex Argent  
D5306 網織銀

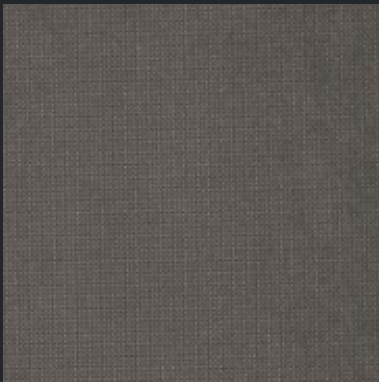
**S**



Plex Gold  
D5309 網織金

**S**

2



Plex Graphite  
D5310 網織墨

**S**



Plex Umbra  
D5307 網織鈦

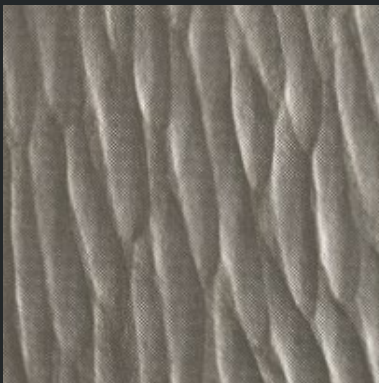
**S**



Plex Bronzestone  
D6486 網織銅

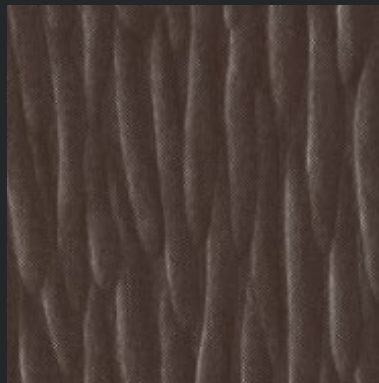
**S**

3



Craft Argent  
D6484 蝕刻銀

**S**



Craft Umbra  
D6485 蝕刻鈦

**S**



Craft Bronzestone  
D6483 蝕刻金

**S**

4



Brushed Umbra  
D5312 鈦褐金

**S**

A

B

C

5

Graphite Veil  
D5391 織織鉛

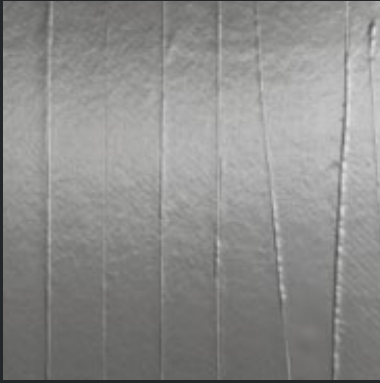


\*紅色字表示為新色。

**S** 表示產品有常備庫存，非庫存產品請洽富美家業務人員訂購。

DECOMETAL® 金麗® 金屬

1



Lounge Steeltone  
D2806 光束銀

**S**



Lounge Bronzestone  
D2805 光束金

**S**

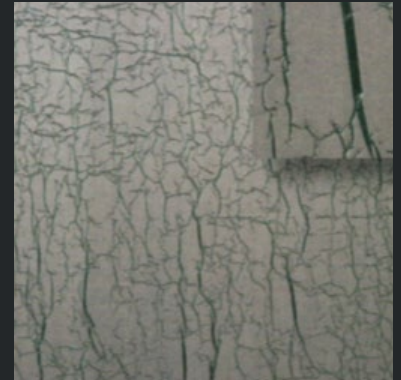
2



Crisp Gold  
D8269 揉畫金



Crisp Anthracite  
D8270 揉畫銀



Crisp Oxygen  
D8271 揉畫綠

3



Crisp Rose  
D8272 揉畫粉



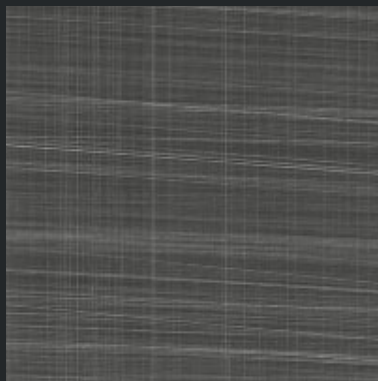
Crisp Antique Copper  
D8274 揉畫古銅

4



Cross-Brushed Brownish Grey  
D8040 織布鉛

**S**



Graphite Veil  
D5391 織織鉛

**S**



Copper Veil  
D5392 織織銅

**S**





Craft Umbra  
D6485 蝕刻鈦

\*紅色字表示為新色。

**S** 表示產品有常備庫存，非庫存產品請洽富美家業務人員訂購。

DECOMETAL® 金麗® 金屬

1



**Cella Goldtone**  
D4939 鑿刻金



**Cella Coppertone**  
DH003 鑿刻銅

**S**



**Cella Black**  
DH004 鑿刻黑

**S**

2



**Cella Polished Smokey Grey**  
D8266 干折鋼

**S**



**Cella Polished Natural**  
D8286 干折銀



**Cella Polished Goldtone**  
D8287 干折金

**S**

3



**Cella Polished Coppertone**  
D8265 干折玫瑰金

**S**



**Cella Polished Tea**  
D4751 干折茶金

**S**

4



Cascade Goldtone  
D8282 熔岩金

\*紅色字表示為新色。

**S** 表示產品有常備庫存，非庫存產品請洽富美家業務人員訂購。

1

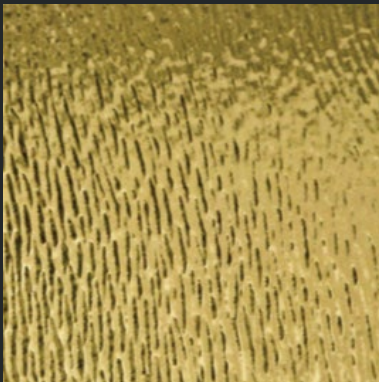


Cascade Natural  
D8281 熔岩銀

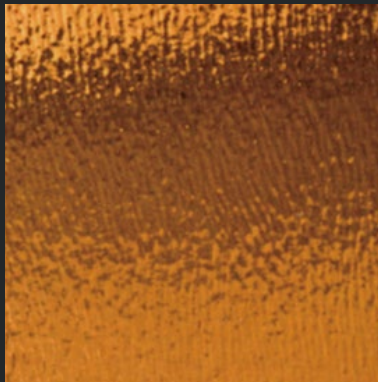


Cascade Smokey Grey  
D8284 熔岩鋼

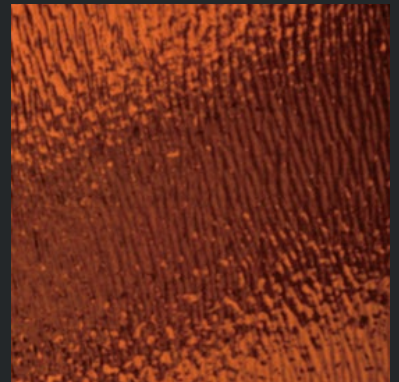
2



Cascade Goldtone  
D8282 熔岩金



Cascade Coppertone  
D8285 熔岩玫瑰金



Cascade Tea  
D8283 熔岩茶金

3

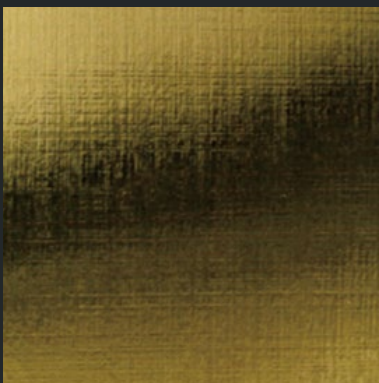


Crossline Polished Natural  
D8288 十字銀

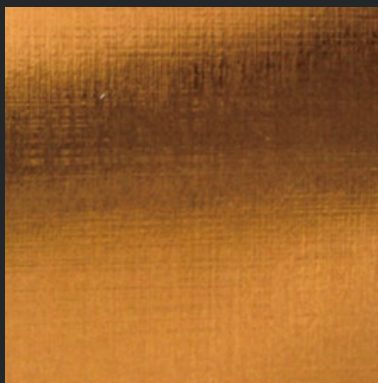


Crossline Polished Smokey Grey  
D8291 十字鋼 **S**

4



Crossline Polished Goldtone  
D8289 十字金



Crossline Polished Coppertone  
D8292 十字玫瑰金 **S**



Crossline Polished Tea  
D8290 十字茶金



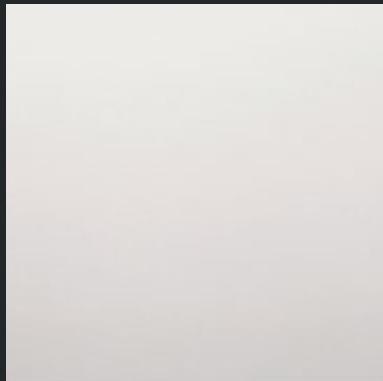
Lava Tea  
DH144 連漪茶金

\*紅色字表示為新色。

**S** 表示產品有常備庫存，非庫存產品請洽富美家業務人員訂購。

DECOMETAL® 金麗® 金屬

1



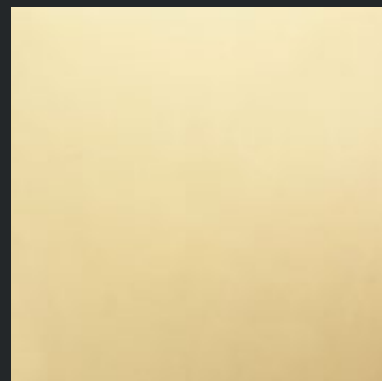
Mirror Aluminium  
D2021 水鏡鋁

**S**



Polished Black  
D1990 冰鏡

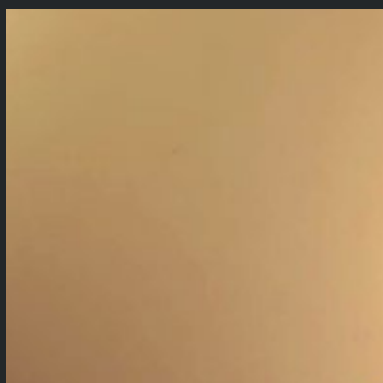
**S**



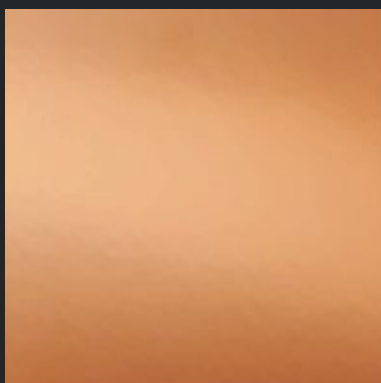
Polished Gold Aluminium  
D2041 魔鏡

**S**

2



Mirror Tea  
DH123 茶金魔鏡



Mirror Coppertone  
DH008 水鏡銅

3



Lava Natural  
DH141 漣漪亮銀

**S**



Lava Smokey Grey  
D5474 漣漪銀

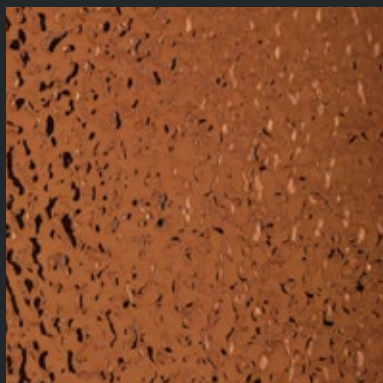
**S**



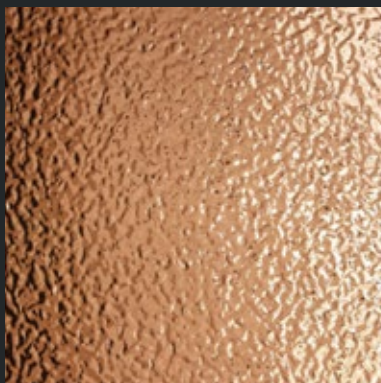
Lava Goldtone  
D5471 漣漪金

**S**

4



Lava Tea  
DH144 漣漪茶金



Lava Coppertone  
DH089 漣漪銅

**S**



Aluminium Mesh  
D2035 銀縷衣

\*紅色字表示為新色。

**S** 表示產品有常備庫存，非庫存產品請洽富美家業務人員訂購。

DECOMETAL® 金麗® 金屬

1



Aluminium Mesh  
D2035 銀縷衣

**S**



Champagne Mesh  
D4941 香檳金縷衣

**S**



Bronze Mesh  
D4899 金縷衣

**S**

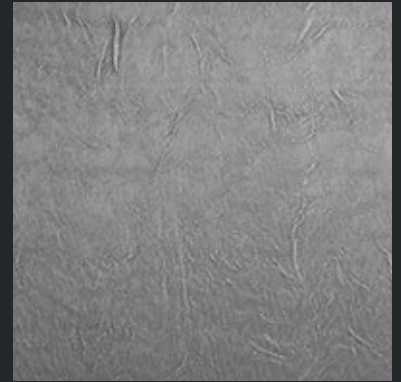
2



Natural Polished Mesh  
DH140 鏡光銀縷衣

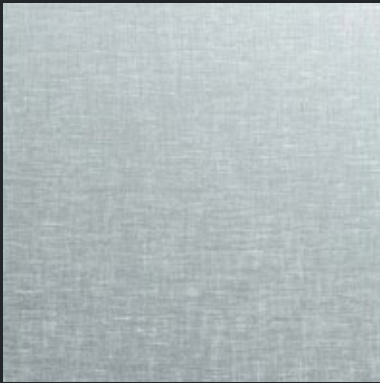


Goldtone Polished Mesh  
DH142 鏡光金縷衣



Vintage Mesh  
DH148 鈦縷衣

3



Cross-Brushed Natural  
DH035 織布鋁

**S**



Cross-Brushed Goldtone  
DH036 織布金

**S**



Anthracite Mesh  
DH039 黑縷衣

**S**

4



Brushed Graphite  
DH038 刷畫墨灰



Copper Crush  
D8109 羽織銅



\*紅色字表示為新色。

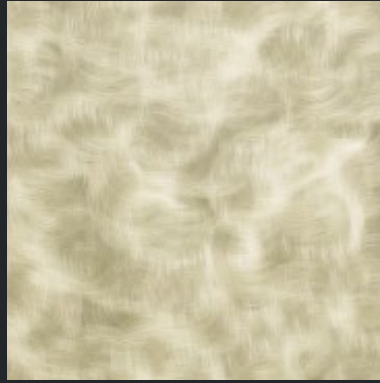
**S** 表示產品有常備庫存，非庫存產品請洽富美家業務人員訂購。

DECOMETAL® 金麗® 金屬

1



Aluminium Crush  
D4116 羽織鋁



Matrix Champagne  
DH014 鋁織香檳

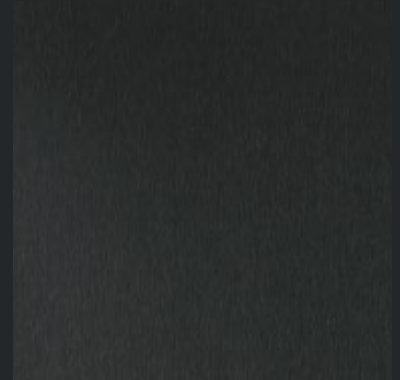
2



Copper Crush  
D8109 羽織銅



Copper Plain Crush Stipple  
D8104 圈線銅



Aluminium Brushed Black  
D8105 黑織鋁





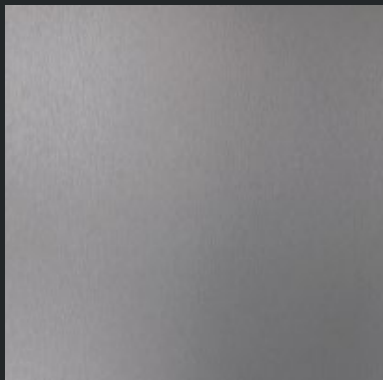
Brushed Copper Aluminium  
D2052 橘織鋁

\*紅色字表示為新色。

**S** 表示產品有常備庫存，非庫存產品請洽富美家業務人員訂購。

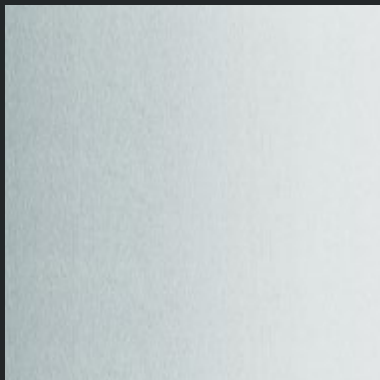
DECOMETAL® 金麗® 金屬

1



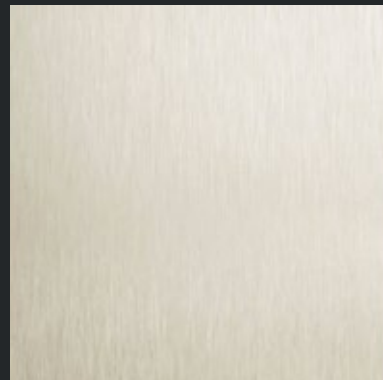
Brushed Pewter  
D2032 白纖鋁

**S**



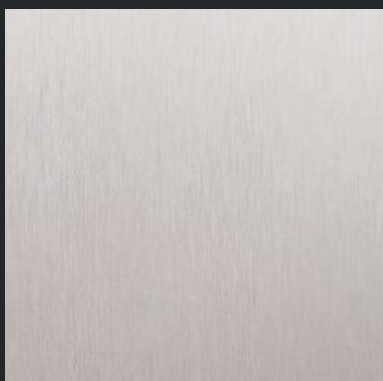
Aluminium Longline  
D4249 線絲鋁

**S**



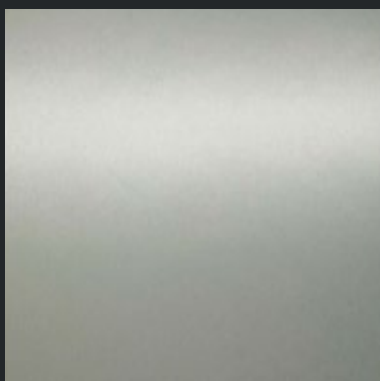
Bronze Brushed Aluminium  
D8103 線絲香檳

2

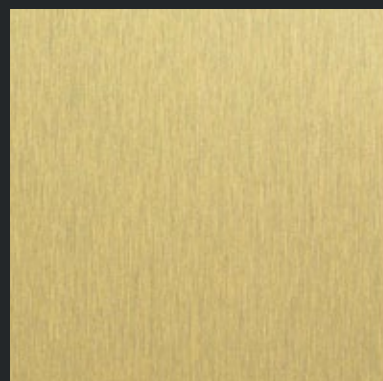


Brushed Aluminium  
D2022 刷畫鋁

**S**

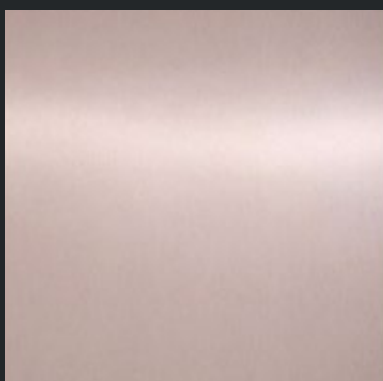


Brushed Champagne  
DH137 刷畫香檳

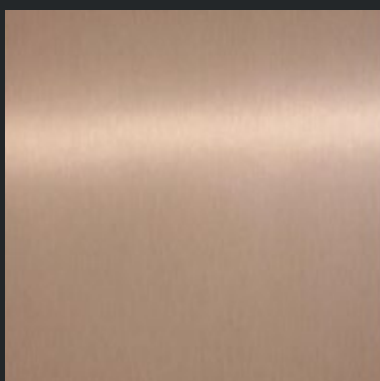


Brushed Goldtone  
D2042 刷畫金

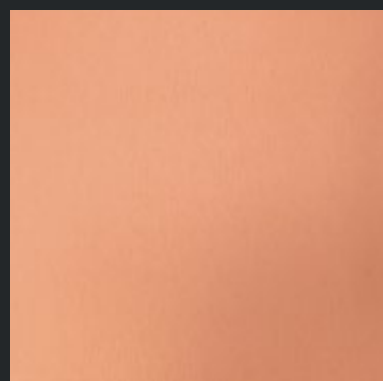
3



Brushed Rosegold  
DH139 刷畫玫瑰金



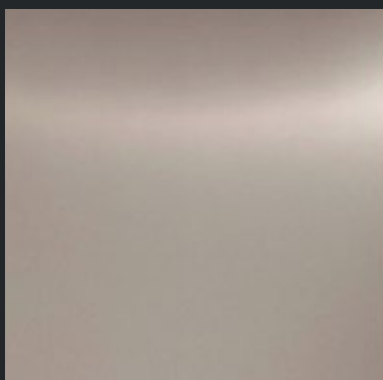
Bronzestone Longline  
DH138 線絲銅



Brushed Copper Aluminium  
D2052 橘纖鋁

**S**

4



Brushed Bronzestone  
DH005 刷畫淺銅



Bronze Brushed Aluminium  
D2126 刷畫銅

**S**



Brushed Stainless Steel  
D2178 科技鋼

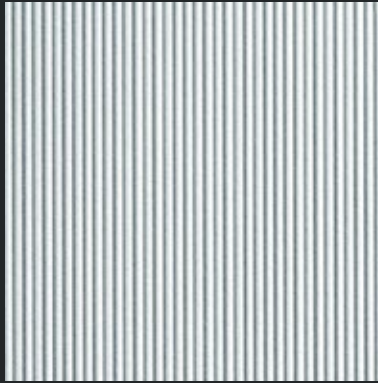
\*紅色字表示為新色。 **S** 表示產品有常備庫存，非庫存產品請洽富美家業務人員訂購。

DECOMETAL® 金麗® 金屬

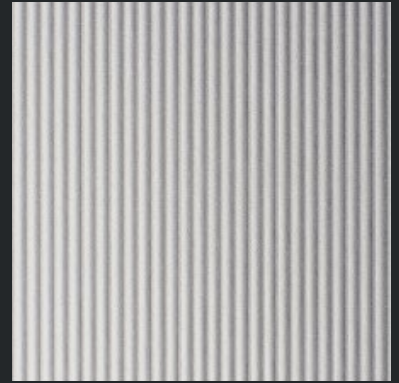
1



Brushed Stainless Steel **S**  
D2178 科技鋼

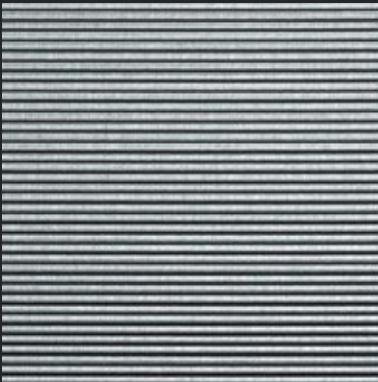


Vertical Corrugated Steeltone  
DH187 直紋鋼



Vertical Corrugated Matte Aluminium **S**  
D4748 直紋鋁

2



Horizontal Corrugated Steeltone  
D4740 橫紋鋼



Horizontal Corrugated Matte Anthracite **S**  
D4778 橫紋鋁



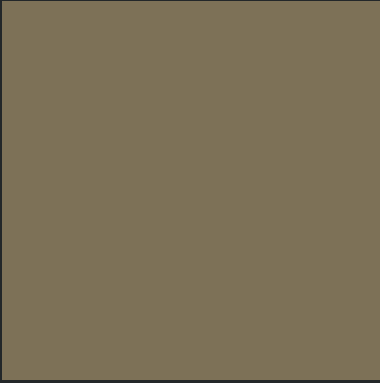
Matte Bronze Aluminium New  
D2006 霧金



\*紅色字表示為新色。 **S** 表示產品有常備庫存，非庫存產品請洽富美家業務人員訂購。

DECOMETAL® 金麗® 金屬

1



Matte Bronze Aluminium New **S**  
D2006 霧金

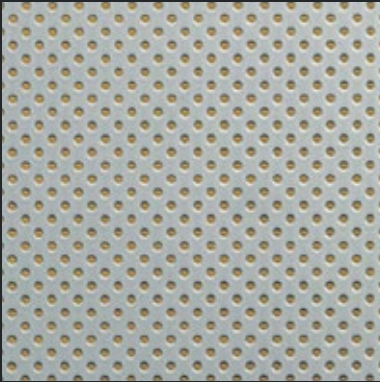


Matte Gunmetal  
DH007 迷霧墨灰



Satin Steeltone  
DH094 絲緞鋼

2



Dots Reverse  
DH098 繁星金



Dots Steeltone  
DH105 繁星鋼



Footplate Steeltone  
DH020 湖波鋼





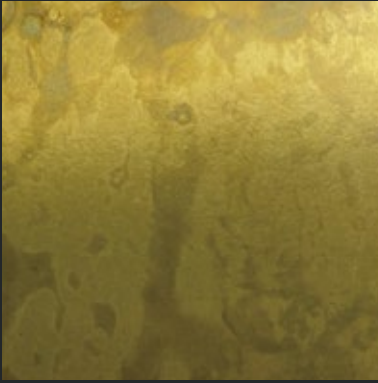
Copper Stratos Diagonal  
D4691 雲彩銅

\*紅色字表示為新色。

**S** 表示產品有常備庫存，非庫存產品請洽富美家業務人員訂購。

DECOMETAL® 金麗® 金屬

1

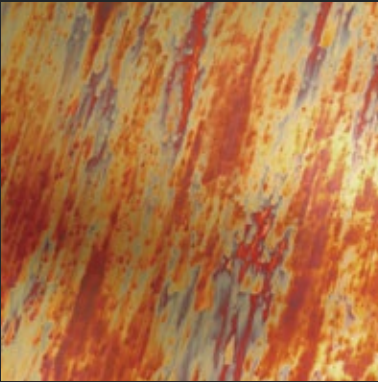


**Copper Brass Antique**  
DH091 古典黃銅



**Light Hammer Copper Antiqued** **S**  
D2121 復古銅

2



**Copper Stratos Diagonal**  
D4691 雲彩銅



**Copper Antique**  
D1999 古典銅



**Copper Maple Leaves**  
D2113 楓葉銅

**S**



K3

Meeting  
5 p.m.

Black Magnetic Chalkboard  
D8205 暗夜黑

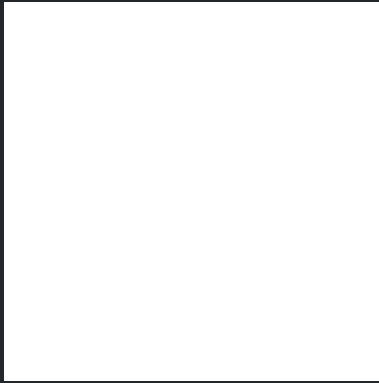


\*紅色字表示為新色。

**S** 表示產品有常備庫存，非庫存產品請洽富美家業務人員訂購。

MAGNETIC LAMINATE 磁性板

1



**Projector Matte**  
D8207 精工白 **S**  
\* 僅具投影功能，僅供應 4'x10'



**Gloss Magnetic Whiteboard**  
D8206 月光白 **S**

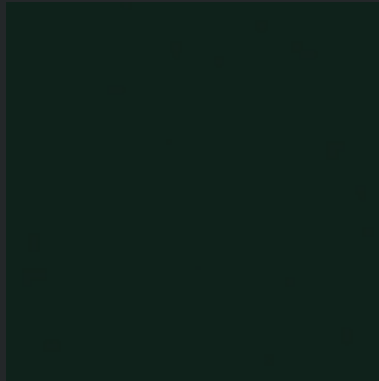


**Grid-point Gloss Whiteboard** **S**  
D8202 晶點白  
\* 僅供應 4'x10'

2



**Macchiato Magnetic Chalkboard** **S**  
D8234 焦糖瑪奇朵



**Green Magnetic Chalkboard** **S**  
D8211 復古綠

\* D8202採間隔5公分之網點設計，如欲了解大尺寸網點設計，請瀏覽富美家官網或洽業務人員。

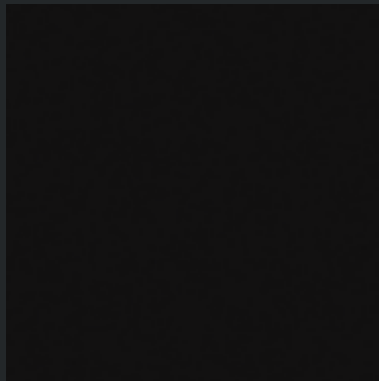
\* 消光面磁性板設計適用於一般粉筆書寫，液態粉筆則不適用。

\* 亮面磁性板設計適用於白板筆或絲滑蠟筆書寫。

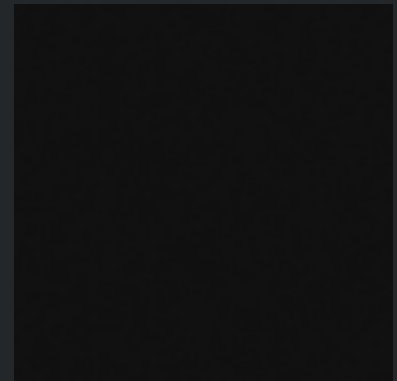
3



**Slate Black** **S**  
D8267 黑岩



**Black Matt Glatt (without magnetic effect)**  
DH026 暗夜黑(無磁性效果)



**Black Magnetic Chalkboard** **S**  
D8205 暗夜黑

Projector Matte  
D8207 精工白



\* 紅色字表示為新色。

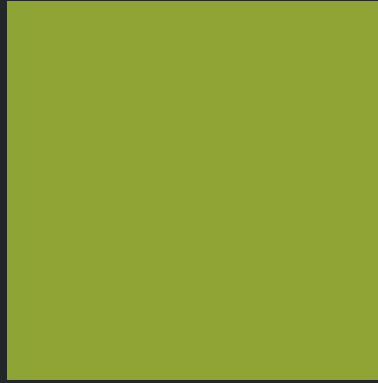
**S** 表示產品有常備庫存，非庫存產品請洽富美家業務人員訂購。

MAGNETIC LAMINATE 磁性板

1



**Raw Magnetic Board**  
D4702 原色磁性板



**Applegreen Magnetic Whiteboard**  
DH112 蘋果綠

2



**Light Grey Magnetic Whiteboard**  
DH110 漆光淺灰

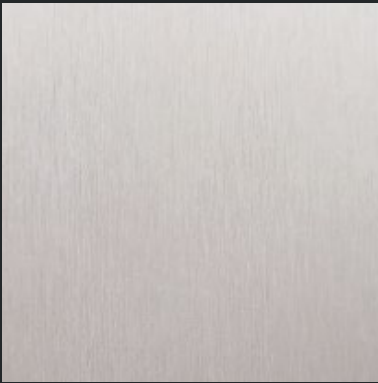


**Stone Grey Magnetic Chalkboard**  
DH029 柔霧中灰



**Stone Grey Magnetic Whiteboard**  
DH028 漆光中灰

3



**Brushed Magnetic Board**  
D4508 刷畫鋁 (具磁性效果)



**Cross-Brushed Magnetic Board**  
DH030 織布鋁 (具磁性效果)



**Macchiato Glossy**  
DH031 亮面焦糖瑪奇朵

## ABOUT US

# SINCE 1913

## 富美家® — 設計於今，恆久於心

### 富美家®商標的演變

#### Formica's LOGO History



富美家®公司為一跨國性企業，於一九一三年由Herbert A. Faber 及 Daniel J. O'Conor在美國俄亥俄州辛辛那提市成立，至今已有百年歷史。成立之初所製造的產品具備了耐火、防潮、耐高溫的特性。由於是用來取代雲母片 (For-Mica)，從而發明了現代裝飾耐火板並命名為 Formica®—富美家®。目前，富美家®在全球每年的銷售額超過30億美元，為全世界建築專業設計師所指定選用之第一品牌。

富美家®提供完整的表面飾材系列產品，包括高級裝飾耐火板、抗倍特®、彩虹心®、金麗®金屬裝飾耐火板、火立克®+、富美家®創藝板™及富美家®實驗室檯面系列等。選用優質產品，可以確保工程品質；富美家®生產的裝飾耐火板符合歐洲 BS EN438：2008 標準，並獲得ISO 9001，14001，OHSAS 18001，及GREENGUARD 認證。

富美家®在全球各地擁有工廠，亞洲地區的工廠分布於台灣新竹、中國上海、中國九江及泰國曼谷。

Formica® was founded in Cincinnati in 1913 by two young men, Herbert A. Faber and Daniel O'Conor. It was intended to serve as an electrical insulator and was created as replacement for Mica, which was used for that purpose at the time. Hence the name "Formica" was chosen. World-renowned artists and architects had also begun to recognize the potential of the decorative laminates and specified them for modernist and art deco interiors.

Formica® offers a complete series of surface deco products, including High Pressure Laminate, Compact Grade™, ColorCore®, DecoMetal®, FRguard®+, Formica® Custom Graphic™, and Formica® CHguard™ Series, etc... All High Pressure Laminate of Formica® conform to European BS EN438：2008 standards. And meanwhile, we have got the certification of ISO 9001, 14001, OHSAS 18001, and GREENGUARD.

Formica® owns manufacturing bases worldwide, with four being located in Asia. Major based are located in HsinChu Taiwan, Shanghai China, Jiujiang China and Bangkok Thailand.

### 富美家®公司創辦人

#### Formica® Corporation Founders



Herbert A. Faber



Daniel J. O'Conor

Formica一詞已經作為專用名詞收入《現代牛津英語詞典》中，是現代耐火板的代名詞。該辭典的第721頁對於Formica一詞的解釋為：富美家名詞，商標。堅硬耐用塑料貼面，適用於工作檯，櫃門及其他表面處理。

"As a professional word, "Formica" has been recorded in The Oxford English Dictionary, and as a replacement for decorative laminates."



現代牛津英語詞典 (O.E.D)

富美家®、富美家®品牌標誌為登記註冊之商標。版權均為得利樂公司 (The Diller Corporation) ©2017 The Diller Corporation 所有。

## CERTIFICATIONS

# Formica®

## Sustainability Statement

### 富美家®可持續發展宣言

富美家集團堅持秉承可持續發展的宗旨來製造和銷售我們的產品。我們致力於提升使用資源的效益，從而達到保護地球環境、資源永續利用的長遠目標。無論現在或將來，富美家®將可持續發展視為一種商業美德和價值觀，並將嚴格地遵守。隨著國際社會越來越關注可持續性發展，富美家集團將以為建築師、設計師和消費者提供全方位的環保表面裝飾材料作為戰略重點。在富美家集團，我們持續致力於開發促進健康環境的新產品。以下，了解更多有關我們如何執行“綠色”概念。



#### 產銷監管鏈驗證

#### FSC™ Chain of Custody Certification

富美家®台灣已於2012年取得FSC™ COC驗證 (License Code: FSC™ C110491)。FSC™ (Forest Stewardship Council™) 森林監管委員會，是一個創建於1993年的國際性、非營利、非政府組織；FSC™宣導以對環境負責、被社會接受和經濟可行的方式來經營全球森林。經FSC™驗證的產品則為“負責任的林木產品”。

#### GREENGUARD 認證

根據美國環境保護局（USEPA）表示，減少室內空氣污染最有效的方法就是減少或消除有害的化學物質排放。富美家集團榮幸地宣布已通過GREENGUARD嚴格排放限制標準。富美家®高級裝飾耐火板、彩虹心®、抗倍特®和金麗®金屬各系列產品在亞洲通過GREENGUARD認證和GREENGUARD金牌認證兩項認證標準。(符合揮發性有機化合物低排放綠色標準，金牌認證包括考慮到敏感個體的安全因素，以及說明確保產品可在學校和醫療機構等環境中使用)這對於富美家集團保證其產品在住家、辦公室、學校等室內環境推動健康室內空氣品質是一重要進展。



#### 碳減量標籤

#### Carbon Reduction Label

富美家集團率先成為全球第一間榮獲英國碳信託公司授予的碳減量標籤之表面裝飾耐火板製造商。富美家集團透過對碳足跡的評估以及為產品貼上碳減量標籤，來實現公司長期致力於減少對全球環境影響的願景。富美家集團榮幸地宣布旗下之高級裝飾耐火板（HPL）、持續壓力層壓板（CPL）、抗倍特®（Compact Grade™）以及富美家®實驗室檯面系列產品進行碳足跡測量，進而獲得英國碳信託公司所授予的碳減量標籤。

#### 台灣「健康綠建材」標章

#### Taiwan Green Building Material Label

2008年，富美家®率先通過「健康綠建材」標章，為美耐板市場第一家通過此項認證的廠商，樹立裝飾飾材業重視消費者健康安全、環境永續性的標竿與典範。富美家®所生產產品之“甲醛”以及“總揮發性有機化合物”等指標性汙染物測試均符合健康綠建材標準，不會傷害人體健康且對環境無害，是室內裝飾飾材最健康安全的優質選擇。





# DECOMETAL®

2020 - 2021 EDITION 注意事項、產品加工指南及索引頁

# FORMICA® DecoMetal® PRECAUTIONS

## 富美家®金麗®金屬美耐板注意事項

### 使用限制

富美家®金麗®金屬美耐板的表面有一層保護膜，此膜在完工前請勿撕去，以避免加工施作過程中產生表面磨損或其他傷害。

電鍍非鋁原色的金麗®金屬美耐板表面若有任何毀損、刮傷、或磨損，會顯現出鋁的天然銀色。鏡面金麗®金屬美耐板則可能會顯現出一些小凹痕，且在部分照明條件下，可能會有輕微之變色。因此，鏡面金麗®金屬美耐板應在施工前，先行撕開小部分保護膜，並在模擬使用地點照明條件下先行檢驗，之後再將保護膜回復原狀，以便施工期間保護材料表面。

富美家®金麗®金屬美耐板D5316砂銹，其材質含有鐵質，會產生些許磁性物理現象，另外注意其加工過程中有可能會產生火花，請施工時注意加工安全。

富美家®金麗®金屬美耐板可運用於各式水平與垂直立面之表面裝是，如壁面、牆面、檯面及櫃體表面等；若應於水平之表面裝飾，不建議用在重度使用之水平裝飾處。

### 顏色限制

由於富美家®金麗®金屬美耐板為天然金屬產品製作而成，其表面隨不同角度及光折射角度，會呈現不同的光感，因而造成顏色上有些許的差異，其屬自然物理現象，非屬產品瑕疵。在施工之前，請先檢查所有富美家®金麗®金屬美耐板色調是否一致。您可先撕開保護膜一角檢查色調，之後再將保護膜回復原狀，以便在施工期間保護材料表面。

富美家®金麗®金屬美耐板是有方向性的，且由不同角度觀看時，會顯現出顏色之變換。因此，各面板的紋路走向務必一致，且在與基材組合之前，務必檢查整體外觀。在各產品保護膜外印有指示方向之箭頭，請依指示方向貼合。因此，施工前，切勿將保護膜撕除。

如將富美家®金麗®金屬美耐板，直接曝曬陽光之下，可能導致顏色有所改變。而長時間使用所造成些色差，不應被視為產品瑕疵。

有時，在已拋光或電鍍的鋁製富美家®金麗®金屬美耐板上，會有顏色干擾（牛頓環圈）產生。在施工前，相對照明條件下，檢查所有表面，並在檢查後將保護膜回復原狀，以便在施工期間保護材料表面。

### 注意事項

富美家®金麗®金屬美耐板會導電，因此，如與電源接觸，可能導致有休克或短路危險。而尖銳面亦可能切斷電線。

詳細產品使用說明請參考富美家網站 [www.formica.com](http://www.formica.com)

### Application Restrictions

A protective coating is supplied on all sheets of DecoMetal® laminates for protection during handling, fabrication and transport. It is recommended that the protective coating is left on the laminate until the finished product is installed and ready for use. Directional patterns have an arrow on the protection coating indicating proper direction for application.

Damage, scratches or wear to the surface of the colored aluminum patterns will reveal silver natural aluminum. Mirror finishes may show some small dimples and, in certain lighting conditions, may display slight color changes. Therefore, prior to fabrication, mirror finish metal laminates should be viewed under lighting conditions specific to the application by peeling back a portion of the protection coating for visual inspection.

DecoMetal® D5316 Korten features a melamine surface incorporating iron particles. Some magnetic effect may be evident. Sparks can be emitted during processing. In addition, D5316 Korten is a hand-made design and each individual sheet is unique. Variations between sheets are characteristic of the design and manufacturing process.

### Colour Restrictions

Due to deviations that are inherent to natural metal products, Formica® DecoMetal® products may display a range of color shades, which do not indicate a product defect. Check that all sheets are of consistent shading before fabrication. Lift a corner of the protection coating to check shading; reposition protection coating after color check to protect the surface during fabrication.

Formica® DecoMetal® is directional and may show a color shift when viewed at different angles. It is absolutely necessary that the running direction is the same, and the general appearance checked, before assembly. Arrows are printed on the protection coating of items that have a directional pattern, indicating alignment direction. Do not remove the protection coating prior to fabrication.

Exposure of Formica® DecoMetal® sheets to direct sunlight may produce color change in the tinted surface coating. Any slight change in color over time does not indicate a product defect.

Occasionally, interference colors (Newton rings) can occur on polished, anodized aluminum surfaces. Check all polished aluminum laminates under the relevant lighting conditions before fabrication by lifting a corner of the protection coating; reposition the protection coating after checking to protect the surface during fabrication.

### Precautions

All laminates of thickness 2mm or less must be supported by a suitable substrate.

Plywood, chipboard and medium density fibreboard (MDF) are substrate materials which lend themselves to good fabrication.

# FORMICA® MAGNETIC LAMINATE PRECAUTIONS

## 富美家®磁性板注意事項

### 富美家®磁性板

富美家®磁性板適用於空調空間，如室內空氣條件太過乾燥，或是直接接觸熱源，磁性板的表面會變乾且容易裂開，但是可以短時間承受60°C高溫。

### 亮面

亮面的設計適用於白板書寫。用專業的白板筆書寫的內容可以直接擦拭。選用的白板筆品質對擦拭效果具有影響（見下文）。

### 消光面

消光面的設計適用於粉筆書寫。可以像普通教室黑板一樣，用清水和海綿清潔即可，其表面上有一層保護膜。切勿使用液態粉筆。

磁性板D8207消光表面是一種專門為投影研發的表面，可以用於高射投影機或類似設備。其優勢在於能夠明顯減少反射作用。本產品也可以用白板筆書寫，但是由於表面略為粗糙，所以不能保證再直接擦拭的時候，會不留任何痕跡。

### 白板筆一般說明

用專業的白板筆書寫的文字，可以直接擦拭。根據使用的白板筆品質和拋光工藝，可能會留下一些很淺的可見痕跡（“殘影”），根據使用頻率，需要過一段時間進行徹底清潔。徹底清潔時，建議使用乙醇或專業白板清潔劑。

根據使用經驗白板筆的品質、老化程度、使用時間和存放條件，都會影響清潔效果。鑒於白板筆墨水的混合比例條件（含有3種成分），白板筆必須水平存放，才能保證直接擦拭的效果。所以請完全遵照廠家規定的存放說明。

採取上述措施之後，如果在清潔白板時仍然遇見問題，建議首先徹底清潔白板表面，然後再試用不同類型的白板筆。

### Formica® Magnetic Laminate

Formica® Magnetic Laminate should be used in well air-conditioned rooms without exposing to direct heat. Surface temperature should not be allowed to exceed 60°C to avoid surface cracking.

Careshould be taken when cutting the magnetic laminate sheets as sparks and flying chippings can occur. Eye protection must be worn even when guardsare in place!

### Gloss Surface

Text and images can be drawn onto the surface using good quality drywipe marker pens or water-soluble liquid chalk pens. This can be removed using a felt-based eraser.

Note: The longer the images or text is left on the surface, the more difficult they are to remove. Extra effort may be required to remove stubborn liquid chalk residue.

### Matte Surface

Text and images can be drawn onto the surface using conventional classroom chalks and water-soluble liquid chalk pens. Conventional classroom chalks can be removed using a soft cloth or a felt chalkboard eraser. Water-soluble liquid chalk pens can be removed with a soft damp cloth.

Matte surfaces (e.g. D8207) are especially developed as visual display projection surfaces with the properties of low reflective surfaces.

### General Note on Board Markers

Text and images can be drawn onto the surface using appropriate board markers and it can be removed using a soft cloth or a feltchalkboard eraser.

Depending on the quality of the board markers , no ghosting should occur, however if some ghosting may be visible from the residue left on the surface, it can be removed using a damp cloth.

Please note that some surface finishes have limited dry wipe capabilities and that frequent, intensive cleaning is recommended to be done on a regular basis to help remove ghosting and chalk residues.

# FABRICATION GUIDANCE

## 產品加工指南

### 搬運

1. 大尺寸板材通常需要兩個人一起搬運。搬運美耐板時需要兩個人在美耐板兩端搬運，讓美耐板形成拱形；搬運時，請務必小心，以避免破裂或損傷。
2. 無論板材厚薄，均不可以捲曲搬運，必須整板平鋪運輸。

### 儲存

美耐板應以水平、背對背、面對面的方式存放，應在最上面放置墊板防止材料可能的損壞並降低表面翹曲的可能性。注意防潮防熱，並且避免將產品與地面或與外牆直接接觸。請將產品存放在溫度高於18°C和相對濕度高於50%的環境中。

### 基材

1. 夾板
2. 中密度纖維板 (MDF)
3. 刨花板

為了保證施工品質，需要使用高品質的基材，其目的有三個：

1. 支撐美耐板
2. 抵抗彎曲變形
3. 達到性能要求建議使用夾板，中密度纖維板 (MDF)，刨花板作為基材。因為這些基材均是以纖維為基礎，和美耐板相近，所以比較適合作為基材。混凝土、石膏板、實木或線板不建議用作基材。

基材需砂磨平整、乾淨、無油膩、厚度均勻，保證基材表面有良好的平整度是非常重要的。

注意：就平整性而言以中密度板為最佳選擇，以結構強度而言則夾板最為理想。由於溫度及相對濕度的環境影響，會有一定程度的尺寸變異，因此需要在大面積使用時，考慮基材的結構及密度。理想的情況為溫度24°C，相對濕度為45%左右。美耐板及基材在黏合前，一定要達到某些條件要求。太潮濕或太乾燥對往後的貼合有相當程度的影響；材料太過乾燥，除了對膠合產生困難外，同時大量吸濕的結果會導致板材大幅的伸張既扭曲變形，將影響施工。

### Handling

Care should be taken when handling decorative laminates to avoid breakages and damage. When loading and unloading, sheets should be lifted, not slid. Abrasion between decorative faces should be avoided.

Individual sheets should be carried with the decorative face towards the body. Sheets become rigid and thus easier to handle if they are bowed along the longitudinal axis. Large sheets should always be handled by two men. All DecoMetal® laminates should be transported and stored flat, it is not recommended to roll these laminates for transport.

### Storage

Formica® laminates should preferably be stored face to face, flat in horizontal racks. The use of a cover board for covering the top sheet and keeping it flat is recommended. If this is impractical, the top sheet should be turned decorative face downwards, to prevent surface damage and warping. Decorative laminates should always be kept in an enclosed dry store together with corresponding substrate materials, backing boards and adhesives, at a temperature of not less than 18°C (65°F) and relative humidity of no lower than 50%.

### Substrate

All laminates of thickness 2mm or less must be supported by a suitable substrate.

Plywood, chipboard and medium density fibreboard (MDF) are substrate materials which lend themselves to good fabrication. The three purposes of a good substrate are:

1. To support the laminate
2. To resist bowing
3. To meet the required performance specification.

In addition, it is essential that the surface of the substrate should be sufficiently smooth to prevent the transfer of defects through to the decorative laminate surface (commonly known as telegraphing).

Note: MDF is optimal in terms of evenness, and laminate is optimal in terms of structural strength. Temperature and relative humidity may cause dimensional deformation to a certain degree, so in case of large area application, please take into consideration substrate structure and density. The ideal situation is at temperature of 24°C and relative humidity of about 45%.

The refractory board and substrate should be bonded after certain conditions are met. Too damp or dry conditions may influence later bonding to a considerable degree; drier material will not only make bonding difficult, but absorb a large amount of moisture, leading to significant board expansion, i.e. torsional deformation, affecting the construction.

條件說明 Conditions	相對濕度及含水率 Relative Humidity & Moisture Content			環境溫度 (°C) Ambient Temperature (°C)		
	最低 Min.	理想 Optimal	最大 Max.	最低 Min.	理想 Optimal	最大 Max.
工作環境相對濕度 Relative humidity in operating environment	30%	45%	60%	18%	24%	-
美耐板含水率 Moisture content for refractory board	4%	5%	6%	18%	24%	-
刨花板含水率 Moisture content for flakeboard	8%	10%	12%	18%	24%	-

# INDEX

## 索引頁

頁碼 Page	欄位 Space	色號 Code	中文名稱 Chinese Name	英文名稱 English Name	磁性板 Magnetic	尺寸 Size	厚度(mm) Thickness	常備庫存 Stock
13	B1	D1990-2	冰鏡	Polished Black		4'x8'	1.0	S
25	B2	D1999-3	古典銅	Copper Antique		4'x8'	1.3	
23	A1	D2006-2	霧金	Matte Bronze Aluminium New		4'x8'	1.0	S
13	A1	D2021-2	水鏡鋁	Mirror Aluminium		4'x8'	1.0	S
19	A2	D2022-1	刷畫鋁	Brushed Aluminium		4'x8'	1.0	S
19	A1	D2032-1	白纖鋁	Brushed Pewter		4'x8'	1.0	S
15	A1	D2035-2	銀縷衣	Aluminium Mesh		4'x8'	1.3	S
13	C1	D2041-2	魔鏡	Polished Gold Aluminium		4'x8'	1.0	S
19	C2	D2042-1	刷畫金	Brushed Goldtone		4'x8'	1.0	
19	C3	D2052-1	橘纖鋁	Brushed Copper Aluminium		4'x8'	1.0	S
25	C2	D2113-3	楓葉銅	Copper Maple Leaves		4'x8'	1.3	S
25	B1	D2121-3	復古銅	Light Hammer Copper Antiqued		4'x8'	1.3	S
19	B4	D2126-1	刷畫銅	Bronze Brushed Aluminium		4'x8'	1.0	S
21	A1	D2178-3	科技鋼	Brushed Stainless Steel		4'x8'	0.8	S
03	A2	D2802-2	微芯金	Dimpled Goldtone		4'x8'	1.0	S
07	B1	D2805-2	光束金	Lounge Bronzestone		4'x8'	1.3	S
07	A1	D2806-2	光束銀	Lounge Steeltone		4'x8'	1.3	S
03	B2	D2807-2	微芯銅	Dimpled Bronzestone		4'x8'	1.0	S
17	A1	D4116-2	羽纖鋁	Aluminium Crush		4'x8'	1.0	S
19	B1	D4249-1	線絲鋁	Aluminium Longline		4'x8'	1.0	S
29	A3	D4508	刷畫鋁(具磁性效果)	Brushed Magnetic Board	M	4'x8'	1.0	
25	A2	D4691-3	雲彩銅	Copper Stratos Diagonal		4'x8'	1.3	
29	A1	D4702	原色磁性板	Raw Magnetic Board	M	4'x8'	1.0	
21	A2	D4740-1	橫紋鋼	Horizontal Corrugated Steeltone		4'x8'	0.9	
21	C1	D4748-1	直紋鋁	Vertical Corrugated Matte Aluminium		4'x8'	0.9	S
09	B3	D4751-3	干折茶金	Cella Polished Tea		4'x8'	1.3	S
21	B2	D4778-1	橫紋鋁	Horizontal Corrugated Matte Anthracite		4'x8'	0.9	S
15	C1	D4899-2	金縷衣	Bronze Mesh		4'x8'	1.3	S
09	A1	D4939-2	鑿刻金	Cella Goldtone		4'x8'	1.3	
15	B1	D4941-2	香檳金縷衣	Champagne Mesh		4'x8'	1.3	S
05	A1	D5306-2	網織銀	Plex Argent		4'x8'	1.0	S
05	B2	D5307-2	網織鈦	Plex Umbra		4'x8'	1.0	S
05	B1	D5309-2	網織金	Plex Gold		4'x8'	1.0	S
05	A2	D5310-2	網織墨	Plex Graphite		4'x8'	1.0	S
05	A4	D5312-1	鈦褐金	Brushed Umbra		4'x8'	1.0	S
07	B4	D5391-2	纖織鉛	Graphite Veil		4'x8'	1.3	S
07	C4	D5392-3	纖織銅	Copper Veil		4'x8'	1.3	S
13	C3	D5471-2	漣漪金	Lava Goldtone		4'x8'	1.3	S
13	B3	D5474-2	漣漪銀	Lava Smokey Grey		4'x8'	1.3	S

# INDEX

## 索引頁

頁碼 Page	欄位 Space	色號 Code	中文名稱 Chinese Name	英文名稱 English Name	磁性板 Magnetic	尺寸 Size	厚度(mm) Thickness	常備庫存 Stock
05	C3	D6483-2	蝕刻金	Craft Bronzestone		4'x8'	1.3	S
05	A3	D6484-2	蝕刻銀	Craft Argent		4'x8'	1.3	S
05	B3	D6485-2	蝕刻鈦	Craft Umbra		4'x8'	1.3	S
05	C2	D6486-2	網織銅	Plex Bronzestone		4'x8'	1.0	S
07	A4	D8040-1	織布鉛	Cross-Brushed Brownish Grey		4'x8'	1.0	S
19	C1	D8103-1	線絲香檳	Champagne Longline		4'x8'	1.0	
17	B2	D8104-3	圈線銅	Copper Plain Crush Stipple		4'x8'	1.3	S
17	C2	D8105-1	黑纖鋁	Aluminium Brushed Black		4'x8'	1.0	S
17	A2	D8109-3	羽織銅	Copper Crush		4'x8'	1.3	S
27	C1	D8202	晶點白	Grid-point Gloss Whiteboard	M	4'x10'	1.0	S
27	C3	D8205	暗夜黑	Black Magnetic Chalkboard	M	4'x8'	1.0	S
27	B1	D8206	月光白	Gloss Magnetic Whiteboard	M	4'x8'	1.0	S
27	A1	D8207	精工白	Projector Matte	M	4'x10'	1.0	S
27	B2	D8211	復古綠	Green Magnetic Chalkboard	M	4'x8'	1.0	S
27	A2	D8234	焦糖瑪奇朵	Macchiato Magnetic Chalkboard	M	4'x8'	1.0	S
09	A3	D8265-3	干折玫瑰金	Cella Polished Coppertone		4'x8'	1.3	S
09	A2	D8266-3	干折鋼	Cella Polished Smokey Grey		4'x8'	1.3	S
27	A3	D8267	黑岩	Slate Black	M	4'x8'	1.0	S
07	A2	D8269-2	揉畫金	Crisp Gold		4'x8'	1.0	
07	B2	D8270-2	揉畫銀	Crisp Anthracite		4'x8'	1.0	
07	C2	D8271-2	揉畫綠	Crisp Oxygreen		4'x8'	1.0	
07	A3	D8272-2	揉畫粉	Crisp Rose		4'x8'	1.0	
07	B3	D8274-3	揉畫古銅	Crisp Antique Copper		4'x8'	1.3	
03	A4	D8275-3	月相綠	Moon Turquoise Copper		4'x8'	1.3	
03	B3	D8276-3	月相黑玫瑰	Moon Dark Copper		4'x8'	1.3	
03	A3	D8277-3	月相亮玫瑰	Moon Light Copper		4'x8'	1.3	
03	C3	D8278-3	月相銅	Moon Brass		4'x8'	1.3	
03	C1	D8279-3	浮雕古銅	Diamond Antique Brass		4'x8'	1.3	S
03	B1	D8280-3	浮雕玫瑰金	Diamond Antique Copper		4'x8'	1.3	S
11	A1	D8281-3	熔岩銀	Cascade Natural		4'x8'	1.3	
11	A2	D8282-3	熔岩金	Cascade Goldtone		4'x8'	1.3	
11	C2	D8283-3	熔岩茶金	Cascade Tea		4'x8'	1.3	
11	B1	D8284-3	熔岩鋼	Cascade Smokey Grey		4'x8'	1.3	
11	B2	D8285-3	熔岩玫瑰金	Cascade Coppertone		4'x8'	1.3	
09	B2	D8286-3	干折銀	Cella Polished Natural		4'x8'	1.3	
09	C2	D8287-3	干折金	Cella Polished Goldtone		4'x8'	1.3	S
11	A3	D8288-3	十字銀	Crossline Polished Natural		4'x8'	1.3	
11	A4	D8289-3	十字金	Crossline Polished Goldtone		4'x8'	1.3	

# INDEX

## 索引頁

頁碼 Page	欄位 Space	色號 Code	中文名稱 Chinese Name	英文名稱 English Name	磁性板 Magnetic	尺寸 Size	厚度(mm) Thickness	常備庫存 Stock
11	C4	D8290-3	十字茶金	Crossline Polished Tea		4'x8'	1.3	
11	B3	D8291-3	十字鋼	Crossline Polished Smokey Grey		4'x8'	1.3	S
11	B4	D8292-3	十字玫瑰金	Crossline Polished Coppertone		4'x8'	1.3	S
09	B1	DH003-2	鑿刻銅	Cella Coppertone		4'x8'	1.3	S
09	C1	DH004-1	鑿刻黑	Cella Black		4'x8'	1.3	S
19	A4	DH005-1	刷畫淺銅	Brushed Bronzestone		4'x8'	1.0	
23	B1	DH007-3	迷霧墨灰	Matte Gunmetal		4'x8'	1.0	
13	B2	DH008-3	水鏡銅	Mirror Coppertone		4'x8'	1.0	
17	C1	DH014-2	鉛織香檳	Matrix Champagne		4'x8'	1.3	
03	C2	DH018-2	微芯鈦	Dimpled Anthracite		4'x8'	1.0	S
23	C2	DH020-2	湖波鋼	Footplate Steeltone		4'x8'	1.3	
27	B3	DH026	暗夜黑(無磁性效果)	Black Matt Glatt (without magnetic effect)	M	4'x8'	1.0	
29	C2	DH028	漆光中灰	Stone Grey Magnetic Whiteboard	M	4'x8'	1.0	
29	B2	DH029	柔霧中灰	Stone Grey Magnetic Chalkboard	M	4'x8'	1.0	
29	B3	DH030	織布鋁(具磁性效果)	Cross-Brushed Magnetic Board	M	4'x8'	1.3	
29	C3	DH031	亮面焦糖瑪奇朵	Macchiato Magnetic Whiteboard	M	4'x8'	1.0	
15	A3	DH035-1	織布鋁	Cross-Brushed Natural		4'x8'	1.0	S
15	B3	DH036-1	織布金	Cross-Brushed Goldtone		4'x8'	1.0	S
15	A4	DH038-1	刷畫墨灰	Brushed Graphite		4'x8'	1.0	
15	C3	DH039-2	黑縷衣	Anthracite Mesh		4'x8'	1.3	S
13	B4	DH089-3	漣漪銅	Lava Coppertone		4'x8'	1.3	S
25	A1	DH091-3	古典黃銅	Copper Brass Antique		4'x8'	1.0	
23	C1	DH094-2	絲緞鋼	Satin Steeltone		4'x8'	1.0	
23	A2	DH098-2	繁星金	Dots Reverse		4'x8'	1.3	
23	B2	DH105-2	繁星鋼	Dots Steeltone		4'x8'	1.3	
29	A2	DH110	漆光淺灰	Light Grey Magnetic Whiteboard	M	4'x8'	1.0	
29	B1	DH112	蘋果綠	Applegreen Magnetic Whiteboard	M	4'x8'	1.0	
13	A2	DH123-3	茶金魔鏡	Mirror Tea		4'x8'	1.0	
19	B2	DH137-1	刷畫香檳	Brushed Champagne		4'x8'	1.0	
19	B3	DH138-1	線絲銅	Bronzestone Longline		4'x8'	1.0	
19	A3	DH139-1	刷畫玫瑰金	Brushed Rosegold		4'x8'	1.0	
15	A2	DH140-3	鏡光銀縷衣	Natural Polished Mesh		4'x8'	1.3	
13	A3	DH141-3	漣漪亮銀	Lava Natural		4'x8'	1.3	S
15	B2	DH142-3	鏡光金縷衣	Goldtone Polished Mesh		4'x8'	1.3	
13	A4	DH144-3	漣漪茶金	Lava Tea		4'x8'	1.3	
03	A1	DH147-2	浮雕黃銅	Diamond Bronzestone		4'x8'	1.0	S
15	C2	DH148-2	鈦縷衣	Vintage Mesh		4'x8'	1.3	
21	B1	DH187-1	直紋鋼	Vertical Corrugated Steeltone		4'x8'	0.9	

